

## **Historic, Archive Document**

Do not assume content reflects current scientific knowledge, policies, or practices.



RECEIVED  
 1949  
 Department of Agriculture

**Special Early Offer!**  
**10% DISCOUNT**

On orders mailed before July 1st, 1949 and accompanied by cash, you may deduct 10% from the prices listed in this catalog.

**Van Bourgondien Bros., Inc.**

Babylon, Long Island, New York  
*Holland Nurseries at Hillegom*

**TULIP FESTIVAL  
 COLLECTION "A"  
 (Top-Size Bulbs)**

- |                                |                                |
|--------------------------------|--------------------------------|
| Rose Copeland. Rose.           | Wm. Pitt. Orange-red.          |
| Purple Perfection.<br>Purple.  | Zwanenburg. White.             |
| Prunus. Salmon.                | Clara Butt. Pink.              |
| Inglescombe Yellow.<br>Yellow. | Wm. Copeland.<br>Lavender.     |
| All Bright. Blood-red.         | Farncombe Sanders.<br>Scarlet. |

50	bulbs in 10 varieties, separately packed and labeled	\$4.35
100	bulbs in 10 varieties, separately packed and labeled	8.50
250	bulbs in 10 varieties, separately packed and labeled	21.00
1000	bulbs in 10 varieties, separately packed and labeled	79.00

**Van Bourgondien Bros. Inc.**

Nursery in  
 The Netherlands

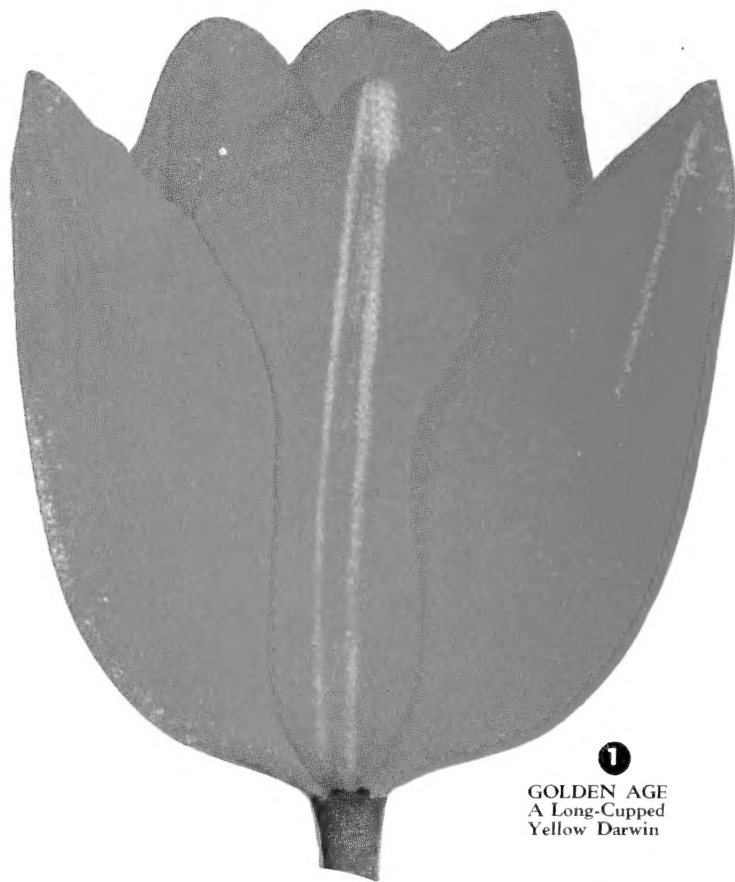
Box 925 **BABYLON**, *Long Island* New York

FALL  
 1949

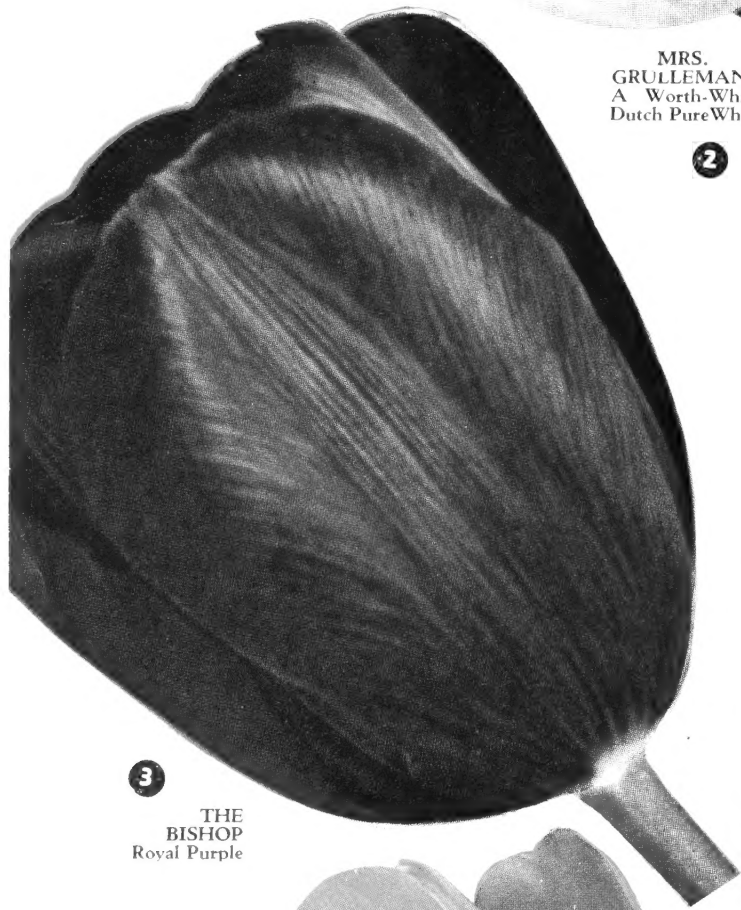


MRS.  
GRULLEMANS  
A Worth-While  
Dutch Pure White

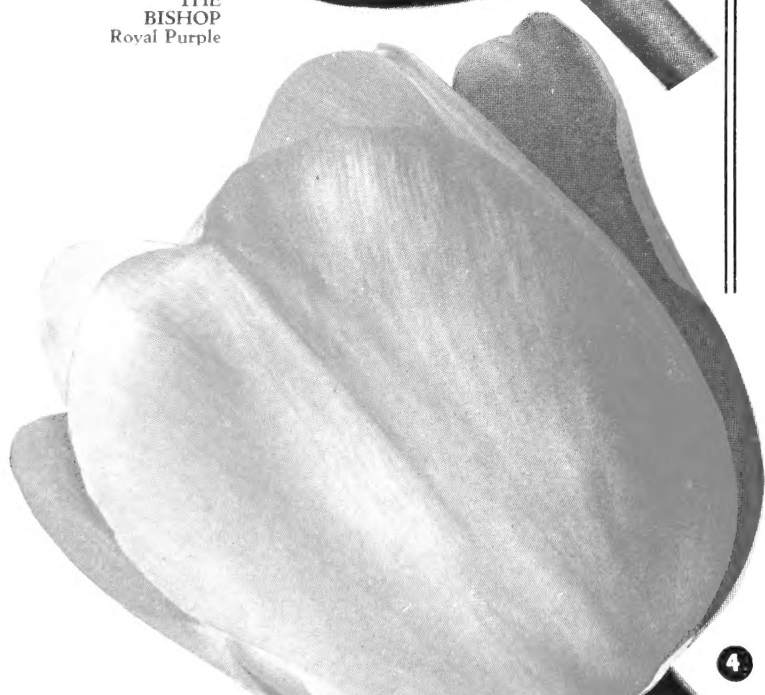
2



1  
GOLDEN AGE  
A Long-Cupped  
Yellow Darwin



3  
THE  
BISHOP  
Royal Purple



4

PRIDE OF ZWANENBURG  
Large Pink Color Favorite

# 8 Tulips From

Van Bourgondien's Remarkable Tulips—  
ALL TOP SIZE BULBS

1	<p><b>GOLDEN ACE.</b> Bright golden yellow faintly overlaid with orange, strong grower, beautifully shaped; among the many new yellow May-flowering Tulips of recent introduction, this is considered the finest . . . . . \$1.30 \$10.00</p>	<p>Doz. 100</p>
2	<p><b>MRS. GRULLEMANS.</b> This is a perfect white Tulip; it has the correct Darwin form, straight, stiff and tall stem; flower petals are thick; it is without question one of the best white Tulips ever offered . . . . . 1.45 11.00</p>	
3	<p><b>THE BISHOP.</b> A remarkably fine flower of ideal form. Color of real deep violet-blue, showing a white star in center. An unusually good show variety as it forces exceptionally well. Combines beautifully with any yellow spring flowers in the garden. One of the best of the dark colored Tulips . . . . . 1.45 11.00</p>	
4	<p><b>PRIDE OF ZWANENBURG.</b> A glorious salmon-rose Tulip with a narrow edge of blush-rose at margin. Except for the paler margin it resembles a wonderful, tall salmon-pink bloom . . . . . 1.35 10.50</p>	

## GIANT TULIP COLLECTION No. 1

Pictured on pages 2 and 3.

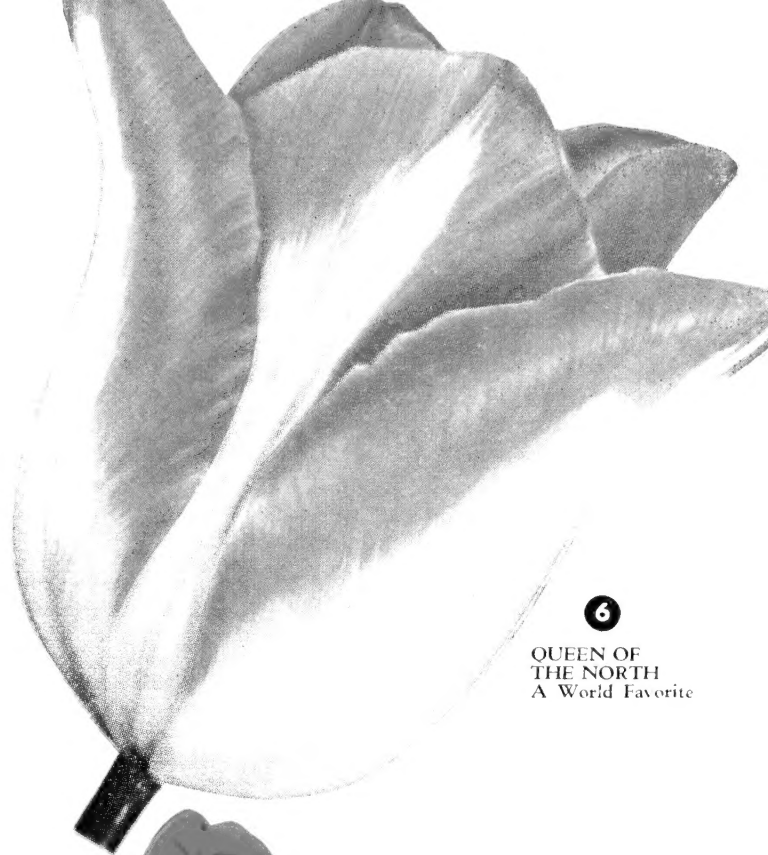
3	bulbs each of these 8 varieties ( 24 bulbs) . . . . . \$ 2.75
12	bulbs each of these 8 varieties ( 96 bulbs) . . . . . 10.50
25	bulbs each of these 8 varieties (200 bulbs) . . . . . 20.40





5

**CITY OF HAARLEM**  
The Most Popular  
Dark Red Darwin



6

**QUEEN OF THE NORTH**  
A World Favorite



7

**SCARLET LEADER**  
A Favorite  
Red Darwin

# Hillegom Holland

Reasonable Prices for Exhibition Varieties

		Doz.	100
5	<b>CITY OF HAARLEM.</b> One of the largest and brightest red Tulips, being an intense dark scarlet with inner base slate-blue and white halo. Very striking when flower is open. Forces well .....	\$1.35	\$10.50
6	<b>QUEEN OF THE NORTH.</b> We have always noted a demand for the lovely bicolor Tulips. In Queen of the North we present one of the most impressive and delicate of all bicolors .....	1.30	10.00
7	<b>SCARLET LEADER.</b> A uniform shade of bright scarlet. A most brilliant and glowing flower carried on tall and straight stems. large size and substance .....	1.30	10.00
8	<b>INSURPASSABLE.</b> A mammoth lilac Tulip. Flower is of great substance and carried on a tall and strong stem. This is a great improvement on the well-known Darwin Tulip, William Copeland, as the flower is at least three times larger and of a far better color .....	1.45	11.00

### TERMS:

**PREPAID SHIPMENTS:** We will prepay all carrying charges to destination on orders accompanied by payment in full.

**NO C.O.D. ORDERS PLEASE—All over-payments promptly refunded.**

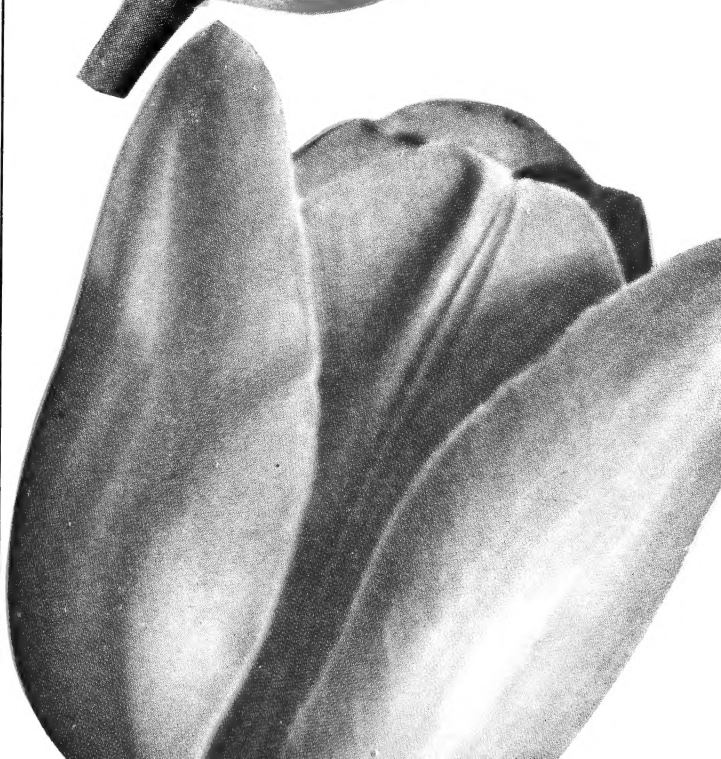
**MINIMUM ORDERS:** We cannot fill orders below \$1.00. Six or more of a variety are sold at the dozen rate; twenty-five or more of one variety at the hundred rate; two hundred fifty or more of one variety at the thousand rate.

**CATALOGS:** If you do not intend to plant bulbs this year, please give this catalog to a friend or return it to us. Thank you.

**CULTURAL DIRECTIONS:** We will include in every shipment, free of charge, our own most explicit cultural directions for indoor as well as outdoor culture.

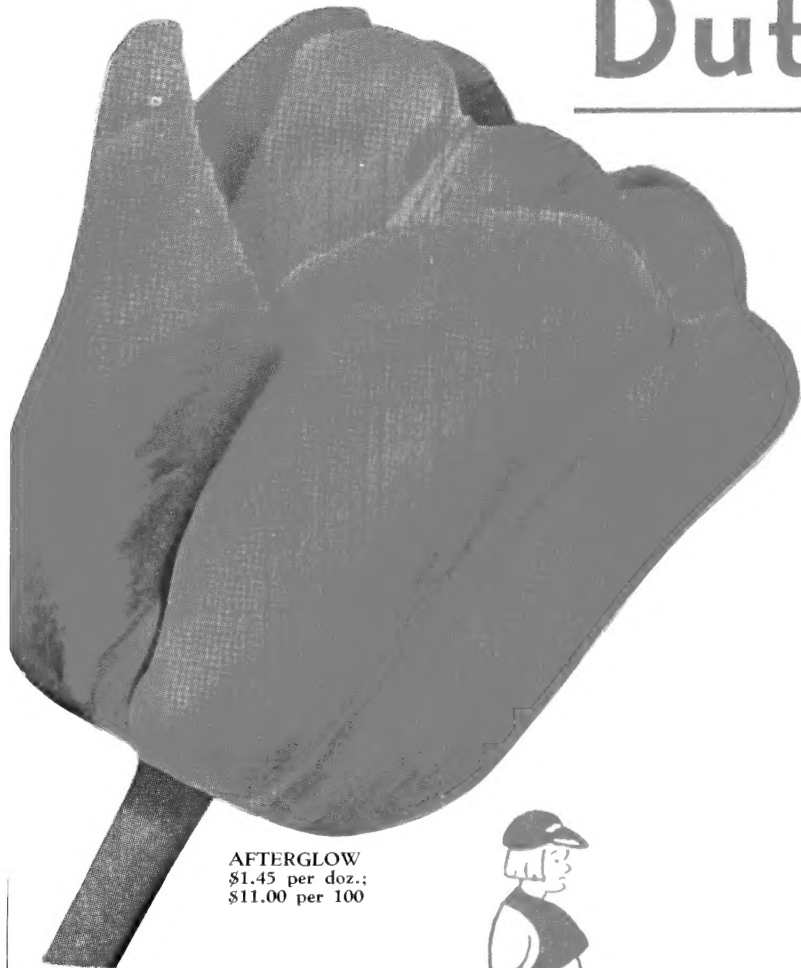
8

**INSURPASSABLE**  
A Lovely Lavender Darwin



# Dutch Exhibition

## A SEETHING KALEIDOSCOPE



AFTERGLOW  
\$1.45 per doz.;  
\$11.00 per 100



PRINCESS  
ELIZABETH MAX.  
\$1.15 per doz.;  
\$9.00 per 100

	Doz.	100
AFTERGLOW. Soft apricot-orange. Tinted pink .....	\$1.45	\$11.00
ALL BRIGHT. Carmine-red edged light blood-red, blue base. Petals shaded purplish red on the outside .....	1.10	8.00
ARISTOCRAT. Carmine-rose, lighter edge. An aristocrat among Tulips in strength and sturdiness. Very tall and very large .....	1.45	11.00
BARTIGON. Fiery crimson, white base .....	1.10	8.00
BELLE JAUNE. Deep yellow .....	1.45	11.00
BLUE EAGLE. Intense deep purple which shines when the sun strikes it .....	1.45	11.00
BLEU AIMABLE. Bright lilac-blue, shaded steel-blue .....	1.35	10.50
CHAS. NEEDHAM. One of the best scarlet-red Tulips .....	1.35	10.50
CLARA BUTT. Salmon-pink. Very popular ..	1.30	10.00
COTE d'AZURE. Not a giant, as produced by some varieties, but a medium sized bloom of a shade closer to blue than we have ever seen. A truly fine color .....	1.45	11.00
DEMETER. A large reddish purple flower on a strong and tall stem .....	1.45	11.00
DRESDEN CHINA. Pale rose, lighter margin .....	1.35	10.50
ECLIPSE. Dark rich red of beautiful form ...	1.35	10.50
FARNCOMBE SANDERS. Brilliant scarlet ..	1.25	9.50
GIANT. Purplish violet flower of enormous size .....	1.35	10.50
GLACIER. Large pure white with white stamen	1.60	12.00
GLORIA SWANSON. Large crimson-red ...	1.30	10.00
GOLDEN HARVEST. A splendid lemon-yellow Tulip of great substance. Has great carrying power and creates a fine showy effect in the garden .....	1.25	9.50
INGA HUME. Red with broad, sharply lined yellow edge; inside deep yellow slightly sprayed red. Black base .....	1.45	11.00
INGLEScombe YELLOW. Bright yellow, very good for mass planting .....	1.10	8.00
KATHLEEN PARLOW. Large, beautifully shaped flower of silvery rose, with a white center, is carried on a strong, tall stem. Its fine coloring draws immediate attention ...	1.35	10.50
KING MAUVE. Purple-mauve, white edge ..	1.50	11.50

## EXHIBITION COLLECTION OF TULIPS FOR SHOW PURPOSES

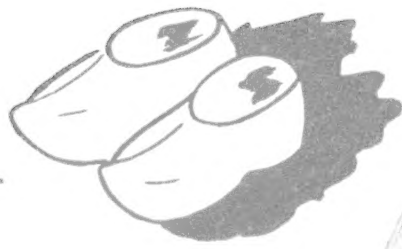
(Pictured on pages 4 and 5)

### SPECIAL OFFER No. 2

AFTERGLOW PRINCESS ELIZABETH MAXIMA  
INGA HUME MARGAUX

6	BULBS each of 4 varieties ( 24 bulbs) .....	\$2.60
12	BULBS each of 4 varieties ( 48 bulbs) .....	5.00
25	BULBS each of 4 varieties (100 bulbs) .....	9.75

# Tulips



## OF IMPRESSIVE COLORS

Doz. 100

<b>LA FRANCE.</b> Deep rose, shading to old rose and delicate pink at the edges; of very large size, effective when planted with mauve and dark lavender varieties .....	\$1.35	\$10.50
<b>LA TULIPE NOIRE.</b> Very large flower of unique bluish black .....	1.30	10.00
<b>MARGAUX.</b> Deep wine-red .....	1.45	11.00
<b>MME. BUTTERFLY.</b> Bluish violet and white, very large .....	1.35	10.50
<b>MOUNT EREBUS.</b> Huge lovely pure snow-white ..	1.35	10.50
<b>MR. VAN ZYL.</b> Superbly beautiful. This Tulip reminds one of the favorite Rosabella, but is of deeper color. Should be in every garden. Has long lasting qualities and fine strong stem. One of the choicest pinks .....	1.35	10.50
<b>NEW ORLEANS.</b> Rich burgundy-purple-red .....	1.35	10.50
<b>NIPHETOS.</b> Creamy yellow. One of the newest varieties not yet known in this country. Highly recommended .....	1.25	9.50
<b>OSSI OSWALDA.</b> Lovely cream-white, flushed rose	1.45	11.00
<b>PHILIP SNOWDEN.</b> Clear satiny pink .....	1.10	8.00
<b>PRIDE OF HAARLEM.</b> Cerise-red. Enormous flowers .....	1.15	9.00
<b>PRINCESS ELIZABETH MAXIMA.</b> Vivid rosy pink, good forcer .....	1.15	9.00
<b>PRINCESS MARY.</b> Long, slender, egg-shaped flower of deep rose-pink, shaded deeper on inside of flower, with a paler marking down each petal. Base white with bluish halo. Truly a grand show variety which shows to its greatest advantage if planted in partial shade .....	1.35	10.50
<b>PRUNUS.</b> Salmon-pink sport of Bartigon .....	1.10	8.00
<b>PURPLE PERFECTION.</b> Heliotrope-lilac, with lighter tint .....	1.20	9.25
<b>QUEEN OF THE NIGHT.</b> One of the darkest Tulips grown, superior to La Tulipe Noire, as it is much larger .....	1.45	11.00
<b>ROSE COPELAND.</b> A lilac-rose sport of William Copeland. Very good for forcing .....	1.10	8.00
<b>SCARLET BEAUTY.</b> Beautiful fiery scarlet without any marking .....	1.35	10.50
<b>SCOTCH LASSIE.</b> Deep lavender with dark blue base. Excellent long lasting variety .....	1.35	10.50
<b>SUNKIST.</b> Deepest golden butter-yellow, large blooms .....	1.30	10.00
<b>THE PEACH.</b> Brilliant peach color, lighter edge ...	1.35	10.50
<b>TUBERGEN'S GLORY.</b> And proud Tubergen can be for introducing such a magnificent Tulip. The flowers are sparkling bright salmon-rosy-red and when fully open display a distinct blue base, greatly adding to the beauty of this variety. Flowers are very large and of excellent substance on stems about 30 inches tall .....	1.35	10.50
<b>WHITE GIANT.</b> Large, pure white, with black anthers .....	1.35	10.50
<b>WM. COPELAND.</b> Lilac-rose .....	1.10	8.00
<b>WM. PITT.</b> Very fine scarlet with lighter shade on edge .....	1.15	9.00
<b>ZWANENBURG.</b> Pure white with black anthers ...	1.25	9.50



**INGA  
HUME**  
\$1.45 per doz.  
\$11.00 per 100

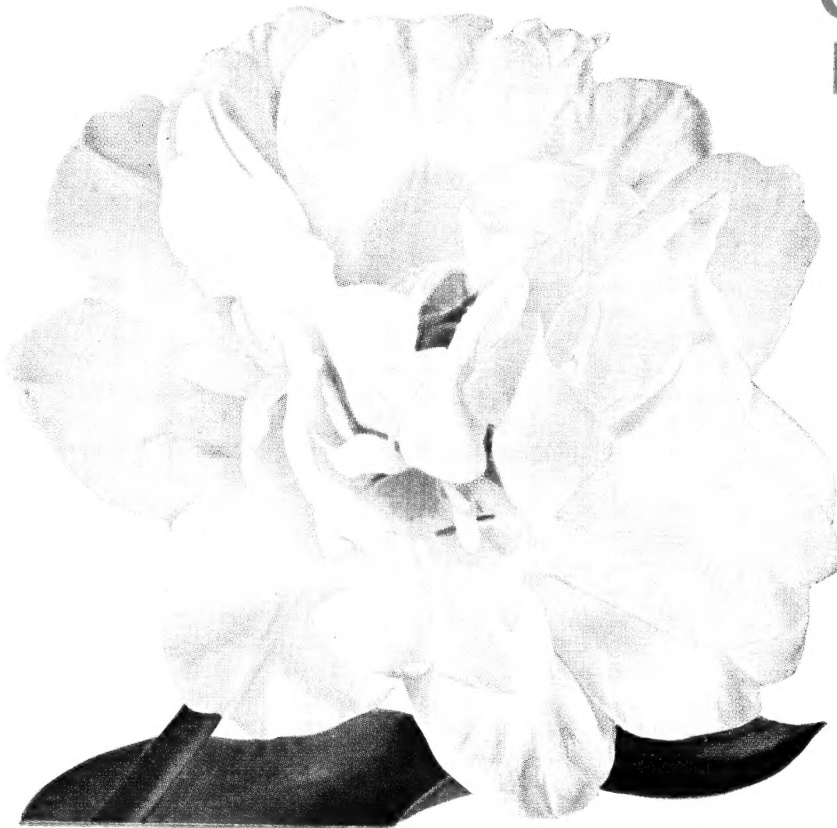


**MARGAUX**  
\$1.45 per doz.  
\$11.00 per 100



# GIANT PEONY-TYPE Double Darwin Tulips

Genuine Imported Bulbs from Holland



MT. TACOMA. \$1.60 per doz.; \$12.00 per 100

	Doz.	100
<b>AVONDZON</b> (Setting Sun). A lovely shade of soft orange, changing to salmon with gold at edge, inside deep orange, resembling the setting sun. A beautiful and outstanding show variety .....	\$1.60	\$12.00
<b>BALTIMORE</b> . Dark amaranth-red, base inside dark blue with green reflections; very large .....	1.60	12.00
<b>EROS</b> . An outstandingly beautiful double Tulip of salmon-pink. One of the new colors in this class of Tulips. Highly recommended .....	1.45	11.00
<b>MOUNT TACOMA</b> . Extra large; of the purest white with emerald-green markings on outer petals. Very strong and sturdy, with long blooming season .....	1.60	12.00
<b>ROYAL YELLOW</b> . Pure golden yellow flower, ideal for bedding purposes. Very double .....	1.60	12.00
<b>UNCLE TOM</b> . An especially extra double, producing a fine shaped flower. The color is a deep mahogany-red, very much admired in all show gardens .....	1.70	13.00

## DOUBLE DARWIN TULIP SPECIAL OFFER No. 20

<b>3</b> BULBS each of 6 named varieties (18 bulbs) .....	<b>\$2.25</b>
<b>6</b> BULBS each of 6 named varieties (36 bulbs) .....	<b>4.35</b>
<b>25</b> BULBS each of 6 named varieties (150 bulbs) .....	<b>16.75</b>

# The Adorable Parrot Tulips

(SEE BACK COVER FOR PARROT TULIPS IN FULL COLOR)

**Stunning Flowers—A New Personality Within Your Reach  
Exotic Beauties That Glorify the Garden**

	Per 3	Doz.	100		Per 3	Doz.	100	
<b>BLUE PARROT</b> . 26 inches. A glorious flower of bright violet, shading to steel-blue. As blossom opens it gradually changes to a most pleasing blue; very large flower with strong stem. Sport and color of Darwin Tulip, Bleu Aimable. Highly recommended .....	\$0.40	\$1.50	\$11.50	<b>RED CHAMPION</b> . 24 inches. Huge flower of bright crimson with slight shading of rosy red; flowers are carried on a strong and stiff stem. Still very scarce. Sport and color of Darwin Tulip, Bartigon .....	\$0.60	\$2.00	\$15.00	
<b>FANTASY</b> . The Parrot Tulip with a straight stem. Being a sport of Clara Butt, it produces a very similar color to Clara Butt, but deeper pink inside the petals .....	.40	1.50	11.50	<b>SUNSHINE</b> . Lovely new Parrot of pure golden yellow, of true Parrot type. One of the latest novelties .....	.75	2.75	20.00	
<b>FIREBIRD</b> . 20 inches. A grand new addition to the Parrot class, of a penetrating red, with the center of the beautifully ruffled petals marked green on the outside .....	\$1.00 each...	2.00	7.00	50.00	<b>THERESE</b> . A sport of Darwin Tulip Farncombe Sanders, it has retained the many good qualities of this so-popular variety. The very large flower is subdued scarlet color with the inside of the petals a lighter but brilliant rosy red ..	.50	1.70	13.00
<b>GADELAN</b> . Violet and mauve, with purple shadings, center white; a beautiful variety of gigantic size and excellent substance .....	.70	2.50	18.00					
<b>OPAL QUEEN</b> . A variety that defies description. Let us state briefly that it is all the name stands for. The opalescent coloring is fascinating and its queenly stature, because of a long stem, beyond compare .....	.45	1.60	12.50					
<b>ORANGE FAVORITE</b> . Glistening deep orange, shaded rose, inside deep orange-scarlet with yellow base, sweet scented flower of great size and brilliant coloring.	.60	2.00	15.00					

## Colorful Messages from Holland PARROT TULIP COLLECTION No. 12

	FANTASY	OPAL QUEEN	ORANGE FAVORITE	SUNSHINE	THERESE
<b>1</b> BULB each of these 5 varieties .....					
<b>3</b> BULBS each of these 5 varieties .....					
<b>12</b> BULBS each of these 5 varieties .....					

# The GREAT RED EMPEROR

The Finest of All Tulips to Bloom in the Spring—A Dazzling, Dominating Red That Flashes With Fire



A glorious scarlet-red Tulip of remarkable size and substance. The petals are 6 inches long and the flower opens in the sun like a tremendous Oriental Poppy disclosing a brilliant black center, bordered with yellow. It blooms about a week or ten days before the May-flowering Tulips and is not too tall. A bed of these would be absolutely startling. Certainly the largest and brightest red Tulip in existence. Height 18 inches.

55c for 3;  
\$1.90 per doz.;  
\$14.00 per 100.

*A  
Tulip  
Deluxe*



## MULTICOLOR

TULIP  
MIXTURE

14 Bulbs Only \$1.00

MAY-FLOWERING IN ALL BEST COLORS  
Hand-Picked Mixture—Cut Flower Assortment

Tingling with life! Colors specially selected (from our best named varieties) to give a full range of Darwin types—in a wonderfully colorful bed! Will furnish a wealth of cut flowers all through May. Sizes average 4 to 4½ inches in circumference.

50 bulbs  
for \$3.25  
100 bulbs  
for \$6.00  
1000 bulbs  
for \$56.00

[7]





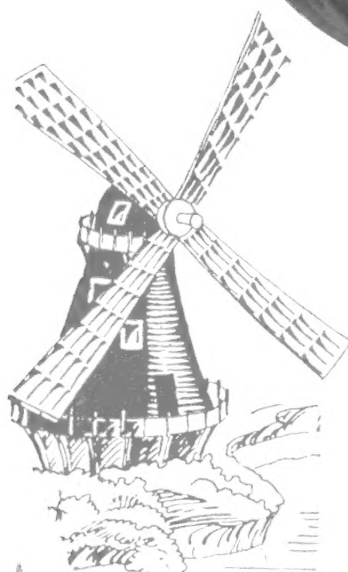
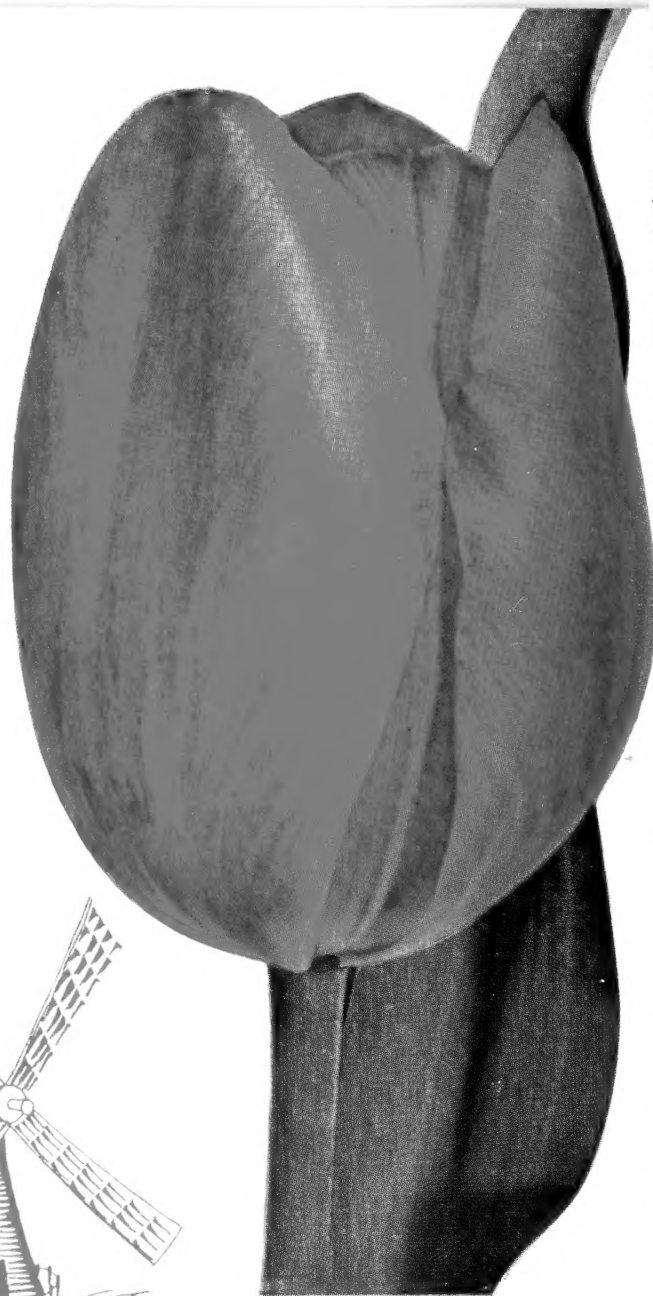
# Best Breeder Full-Colored Tulips

May Flowering, Tall and Graceful

	Doz.	100
<b>ADMIRAL TROMP.</b> Deep cup-shaped flower of bright orange with paler margin. Inside cup scarlet .....	\$1.50	\$11.50
<b>BACCHUS.</b> A beautiful tone of purple. It is egg-shaped and the color is similar to blue Grapes .....	1.50	11.50
<b>CHERBOURG.</b> Golden yellow .....	1.50	11.50
<b>CRUSADER.</b> Large red flower with a violet glow .....	1.50	11.50
<b>DILLENBURG.</b> Brilliant salmon-orange, shaded rose .....	1.40	11.00
<b>GEO. GRAPPE.</b> Very large. Soft mauve throughout with a clear blue base inside. Outstanding new variety .....	1.50	11.50
<b>INDIAN CHIEF.</b> A Tulip of glorious coloring. Indian-brown flushed coppery brown. One of the handsomest of the brown Breeders .....	1.50	11.50
<b>J. J. BOUWMAN.</b> Tomato-red, flushed claret edged yellow. Very outstanding color .....	1.50	11.50
<b>JESSY.</b> Very large blooms. Violet-bronze edged yellow. Tall and striking .....	1.50	11.50
<b>LOUIS XIV.</b> Dark bluish violet with small margin of flushed gold-brown, shaded bronze .....	1.50	11.50
<b>ORANGE DELIGHT.</b> Orange with golden brown edge .....	1.50	11.50
<b>SONATE.</b> A bold deep orange with margin of orange-yellow and pitch-black base. Sturdy stem. Very fragrant .....	1.60	12.00

## GIANT EXHIBITION TULIPS Special Offer No. 8

<b>3</b> EACH of above 12 varieties .....	<b>\$4.35</b>
<b>6</b> EACH of above 12 varieties .....	<b>8.50</b>
<b>25</b> EACH of above 12 varieties .....	<b>31.00</b>



**DILLENBURG**  
\$1.40 per doz.;  
\$11.00 per 100

## Giant Flowered TRIUMPH TULIPS

This new race, which blooms about eight days earlier than the Darwin type, is becoming better known every year and more people are becoming interested in it. The average height is shorter than the Darwins, but they are of extremely sturdy growth, and therefore are excellent for bedding purposes.

	Doz.	100
<b>ALBERIO.</b> Deep wine-red with narrow edge of flesh-pink; very large flower and very sturdy grower .....	\$1.25	\$ 9.50
<b>ALGIEBA.</b> A cheerful shade of light lavender with rosy lavender through center of petals, striking color; strong grower .....	1.25	9.50
<b>ELIZABETH EVERS.</b> A tremendously large flower of fuchsia-red with a very soft silvery suffusion, base white and feathered. Very strong grower and the flower lasts for a long time .....	1.25	9.50
<b>KANSAS.</b> Snow-white with lemon-yellow base, and yellow stamens. One of the best white Tulips for outdoor planting ..	1.25	9.50
<b>KORNEFORUS.</b> Brilliant carmine-red. Really an ideal Triumph Tulip, and its brilliant coloring strikes one's immediate attention .....	1.25	9.50
<b>NOVA.</b> Another extraordinary Tulip, producing a large flower on a strong and sturdy stem. The color is lilac-rose with a silvery sheen; inside vermilion to salmon-rose; base canary-yellow. Highly recommended .....	1.25	9.50
<b>PRES. VON HINDENBERG.</b> Purplish garnet-red with yellow edge; large and strong flower that lasts a long time .....	1.25	9.50
<b>URSA MINOR.</b> Deep golden yellow; an exceptional bedding variety .....	1.25	9.50

**ELIZABETH EVERS**  
\$1.25 per doz.  
\$9.50 per 100

## POINTS TO REMEMBER

Positively do not plant bulbs in borders or beds which are badly drained. Perfect drainage is vital and the most important instruction we can give you. Our guarantee does not cover losses from this cause.

Never use any strong commercial fertilizer or fresh manure when planting bulbs.

When picking the flowers do not cut away any more foliage from your bulbous plants than is necessary. Leaves and foliage store up food for next year's blooming.

Do not let seed pods remain on the stems after flowers have faded—it weakens the bulbs.

Do not dig up bulbs before foliage shows signs of dying, changing to yellow or brown.

Never dry bulbs in the sun—always in the shade.

Do not grow Tulips year after year in the same place. Sooner or later they may be attacked with a fungous disease called "fire blight," which attacks both foliage and flowers. Either change the soil or the location; in other words, follow the principle of crop rotation.

Bulbs should not be stored in an air-tight container.

---

East Northport, Long Island, N. Y.

Dear Sirs: June 9, 1948

The Daffodils I had from you last year came up this spring and were a great success. Several of my friends said they had never seen such large Daffodils.

Enclosed is order for a few from your new catalog just received.

Yours truly,  
CHAS. F. PRAY

---

Baltimore 10, Md.  
Gentlemen: Dec. 27, 1948

I wish to express appreciation for the very superior French Roman Hyacinth bulbs that you sent me in November.

They were pre-war quality and are a joy to have again.

I hope that we may be equally fortunate another year.

Yours truly,  
LOUIS W. ALSTON

---

Washington 16, D. C.  
Gentlemen: Jan. 28, 1949

The bulbs I ordered from you in the late fall arrived in splendid condition, and I want to say they were the finest, healthiest looking, plump bulbs I have ever seen. I must compliment you, not only on the size and quality of the bulbs, but on the painstaking care that went into their labeling and shipment.

Very truly yours,  
A. B. SPAULDING

---

Betsville, Ohio  
Gentlemen:

A word of appreciation. The bulbs purchased from you last autumn for forcing have made a wonderful window garden display.

So many of my neighbors admired them that I think they will win more orders for you—and have won for me a reputation of having magic in my fingers.

I am looking forward to the same success in the garden.

Thanks to your good strong bulbs.  
MRS. C. GUY FRANKHAUSER

---

Elizabethtown, Pa.  
Gentlemen: Nov. 1, 1948

Today I received from you the remainder of my order for bulbs and I want to thank you for the very fine stock you have sent. The bulbs are quite the nicest I have ever received from any house, and I am greatly pleased. Thank you.

Sincerely yours,  
LINDA B. HUBER

---

Cedar Rapids, Iowa  
Dear Sirs: June 27, 1948

The Tulips and Daffodils that I have purchased from you the past three years have been so lovely that I just can't pass up the opportunity of securing some more new varieties from your recent catalog. The Parrot Tulips were especially admired by many neighbors and friends this spring.

This year I shall add a few of your double Darwins, and a few Hyacinths. Even though I haven't written you about it before, I'd like to express my appreciation for the care and attention you give in filling orders. Nowhere have I ever seen such solid and large bulbs. It is indeed a source of satisfaction to know you will be taking care of my Tulip needs again this year.

Very truly yours,  
WILLIAM V. BEYER

Minneapolis, Minn.  
Dear Sir: June 21, 1948

I am sending in my order for Tulips, as the Tulips I got from you last fall were the most gorgeous Tulips I have ever seen, and I guess no one else has seen anything like them. I arranged them on each side of the garden like two half moons. In each bed were 100 different colors; first, outside was Uncle Tom, next was Eros, than was Tacoma; inside was Royal, which was just a few days later in blooming.

No park could even come up to them, for hundreds of people came to admire them, lining up outside the fence to look at them. Was I ever proud of them! I bought a colored film and took pictures of them. People asked me if they were Peonies, they were so double and how pretty. To many I gave your address for they wanted to know where I bought them for myself. I can't praise you enough for them.  
MRS. C. J. NELSON

---

Omaha, Nebr.  
Dear Sirs: Sept. 3, 1948

I want to order from you as I was so well pleased with my order from you last fall. The bulbs were grand and the show they made this spring was simply breathtaking.

So here is my order and I'm hoping you can still fill it completely.

Please send full instructions for planting the small bulbs and each Lily bulb. Thank you. Sincerely,

MRS. W. W. CARLSON

---

Erie, Pa.  
Dear Sirs: June 28, 1948

Enclosed is an order for more bulbs to be sent in the fall. We have always had great success with any we have had from you and have passed that bit of information along to numerous friends.

Our Giant Double Tulips, the gorgeous Parrots and Lily-Flowering, have created quite a sensation in our neighborhood, everyone exclaiming that they are the most beautiful they have ever seen.

It is a privilege, too, to do business with people from whom you are assured the best in quality and consideration and prompt attention.

Very truly yours,  
MRS. W. F. BORN

---

Terre Haute, Ind.  
Gentlemen: June 28, 1948

The Hyacinths I bought from you last year were simply gorgeous. Passers-by stopped to admire and revel in their glorious pure colors and tall, full spikes of flowers. Three of the eight had two spikes each. It was quite a thrill to watch the passing cars slow down in order that the people could see my lovely Hyacinths.

The bulbs were such fine, firm ones and of wonderful size. I thank you very much for such fine stock.

Sincerely,  
MRS. C. P. KINTZ

---

Rumford, R. I.  
Gentlemen: Sept. 7, 1948

Tulips ordered last year completely satisfactory this spring. Jumbo Hyacinths beautiful—Perle Brilliant blossomed half as large again as that pictured in this year's catalog. They were given only ordinary care, with two spaced feedings of bone meal before blooms appeared.

MRS. CECIL J. METCALF

---

Harrington Park, N. J.  
Gentlemen: Feb. 16, 1949

Just a few lines to say how well pleased we are with the 450 Tulip bulbs we got from you last year. The neighbors just rave about them, so much so that we had to give them some to put on the altar of our church. They all want to know where we got them so I told them and all say they never saw any as beautiful as they are. We are also very much pleased with the Amaryllis, we have nine of them; one of them is in full bloom right now.

Hoping the Gladiolus bulbs will prove as satisfactory as the rest of the bulbs I have gotten from you, I beg to remain

Yours respectfully  
JOS. H. MAIER

# English May-Flowering Large Type Tulips ALL TOP SIZE

NEW SLIMNESS IN TULIPS TYPIFIES THESE BEAUTIES

**BARBARA PRATT.** Bright cherry-rose; inside light carmine-rose with yellowish white base. Flowers are long, with slightly reflexing petals; a gorgeous Tulip. \$1.45 per doz.; \$11.00 per 100.

**CARRARA.** Pure white. Early. \$1.45 per doz.; \$11.00 per 100.

**DIDO.** Salmon-orange, inside orange with yellow base. One of the finest ever introduced. \$1.30 per doz.; \$10.00 per 100.

**GRENADIER.** The most brilliant orange-scarlet Tulip in existence. Very fragrant. \$1.45 per doz.; \$11.00 per 100.

**G. W. LEAKE.** Geranium-scarlet. \$1.45 per doz.; \$11.00 per 100.

**INGLESCOMBE YELLOW.** Light yellow. Very late. \$1.10 per doz.; \$8.70 per 100.

**LINCOLNSHIRE.** Beautiful flaming vermilion-red. Excellent for beds. Very late. \$1.45 per doz.; \$11.00 per 100.

**MARJORIE BOWEN.** Color difficult to describe. Consists of buff and salmon shades changing to rosy pink. \$1.45 per doz.; \$11.00 per 100.

**MARSHALL HAIG.** A most brilliant, outstanding, bright red. \$1.45 per doz.; \$11.00 per 100.

**MRS. MOON.** Lily flowering shaped. Yellow. \$1.30 per doz.; \$10.00 per 100.

**MRS. JOHN SCHEEPERS.** Light yellow. \$1.30 per doz.; \$10.00 per 100.

**PRINCESS MARGARET ROSE.** A golden yellow with a clearly defined edge of scarlet-red, making this a striking beauty. Very late blooming. \$1.45 per doz.; \$11.00 per 100.

**ROSABELLA.** Very soft rose with lighter edge. \$1.45 per doz.; \$11.00 per 100.

INGLESCOMBE YELLOW, PRINCESS MARGARET ROSE, and LINCOLNSHIRE are all three very late blooming and grow at the same height. Recommended for prolonging the flowering season.

**PRINCESS  
MARGARET ROSE**  
\$1.45 per doz.; \$11.00 per 100



## Botanical or Rock Garden Tulips

### LEADING BOTANICAL TULIPS

**CLUSIANA.** Often called the "Lady Tulip." A charming, sprightly, vivid, upstanding beauty with gray-blue leaves and a blossom gaily striped in bright rose and white; one of the most fascinating of these species. The small, pointed flower is of artistic form, distinct and beautiful. Plant in masses or in clumps or use it as an edging; you will like it anywhere. \$1.00 per doz.; \$7.50 per 100.

**DASYSTEMON.** Very beautiful dwarf species, especially valuable for planting in the rock garden or for drifts in front of or below evergreens; may also be attractively used for clumps here and there in the early flower border. \$1.45 per doz.; \$11.00 per 100.

**EICHLERI.** A grand Tulip from Turkestan, producing an immense crimson-scarlet flower with glistening black center marked with gold. \$1.35 per doz.; \$10.00 per 100.

**KAUFMANNIANA.** One of the most beautiful of all Tulips. Large, creamy flower, brilliantly marked with carmine, yellow center. It opens flat and is carried on a stem usually less than a foot in height. Blooms in April and is delightful. \$1.35 per doz.; \$10.00 per 100.

**PRAESTANS FUSILIER.** 10 inches. Among the Praestans type it is one of the best scarlet-orange, frequently producing two or more flowers per stem. \$1.60 per doz.; \$12.00 per 100.

### BOTANICAL TULIP Collection No. 7

3 EACH of 5 varieties .....	\$1.60
6 EACH of 5 varieties .....	3.00
12 EACH of 5 varieties .....	5.60

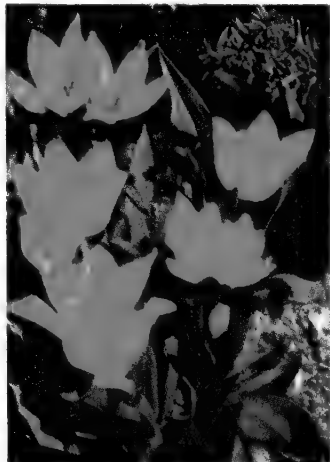


**DASYSTEMON**  
\$1.45 per doz.; \$11.00 per 100

**EICHLERI**  
\$1.35 per doz.; \$10.00 per 100



**PRAESTANS, FUSILIER**  
\$1.60 per doz.; \$12.00 per 100



**CLUSIANA**  
\$1.00 per doz.; \$7.50 per 100



**KAUFMANNIANA**  
\$1.35 per doz.; \$10.00 per 100



# Double Early-Flowering Tulips



DOUBLE TULIP,  
PEACH BLOSSOM  
\$1.25 per doz.;  
\$9.50 per 100

## Single Early Tulips

Excellent for Bedding and Mass Plantings

	Doz.	100
COULEUR CARDINAL. Bright crimson-scarlet with a deeper shade of red, like dew, on the outside ...	\$1.25	\$ 9.50
GENERAL DE WET. Sweet-scented flowers of a fiery orange with yellow center .....	1.25	9.50
KEIZERSKROON. Crimson-scarlet with very attractive golden yellow edge .....	1.30	10.00
PINK BEAUTY. Bright cherry-rose, slightly striped white .....	1.45	11.00
RISING SUN. Clear golden yellow of great beauty and vigor .....	1.25	9.50
VAN DER NEER. Dark purple flower of a most brilliant tone and splendid shape .....	1.30	10.00
WHITE BEAUTY. Of all white Tulips this variety is the most handsome .....	1.45	11.00



REMBRANDT TULIP,  
\$1.45 per doz.

AMERICAN FLAG  
\$11.00 per 100.

	Doz.	100
ELECTRA. Splendid deep carmine. Sport of Murillo...	\$1.25	\$9.50
MR. VAN DER HOEF. Golden yellow .....	1.25	9.50
ORANGE NASSAU. Orange-red .....	1.25	9.50
PEACH BLOSSOM. The rose-pink Murillo .....	1.25	9.50
SCHOONOORD. A pure white sport of Murillo .....	1.25	9.50
VUURBAAK. Brilliant scarlet flowers of enormous size are borne on very fine, straight, stiff stems .....	1.25	9.50

### COLLECTION No. 10

Of six varieties of early Tulips.

DOUBLE EARLY TULIPS		SINGLE EARLY TULIPS	
Peach Blossom. Pink.		Keizersdroom. Red and yellow.	
Mr. van der Hoef. Yellow.		Couleur Cardinal. Red.	
Orange Nassau.		General de Wet. Sweet-scented orange-yellow.	
3 EACH of 6 varieties (18 bulbs) .....		\$2.00	
6 EACH of 6 varieties (36 bulbs) .....		3.75	
12 EACH of 6 varieties (72 bulbs) .....		7.40	
25 EACH of 6 varieties (150 bulbs) .....		14.50	



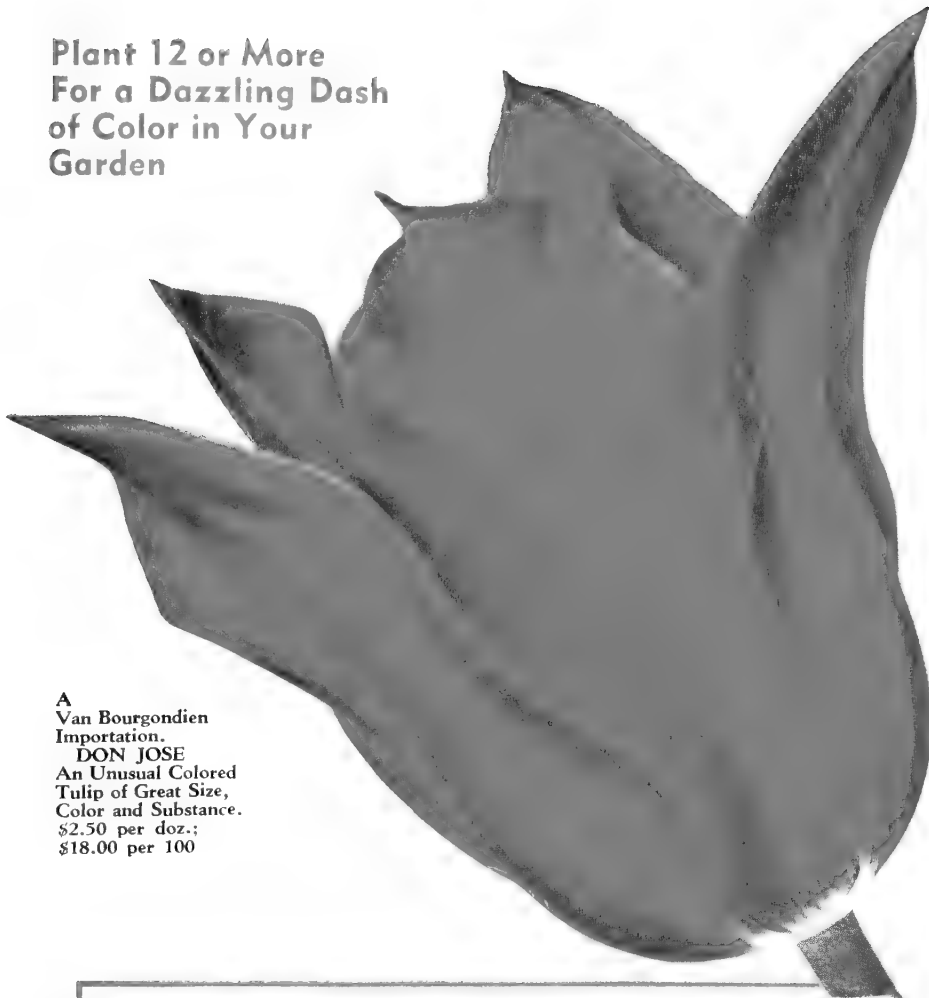
KEIZERSKROON  
\$1.30 per doz.;  
\$10.00 per 100

## REMBRANDT Tulips

	Doz.	100
AMERICAN FLAG. Dark red with broad white lines and blue base. So named because the three colors resemble the American Flag. A real novelty .....	\$1.45	\$11.00
CORDELL HULL. A splendid new novelty which becomes more beautiful as the flower ages. It is a combination of silvery white and blood-red stripes, making a very striking effect. Highly recommended for decorative purposes .....	1.25	9.50
REMBRANDT MIXED. Finest mixed colors ...	1.25	9.50



Plant 12 or More  
For a Dazzling Dash  
of Color in Your  
Garden



A  
Van Bourgondien  
Importation.  
**DON JOSE**  
An Unusual Colored  
Tulip of Great Size,  
Color and Substance.  
\$2.50 per doz.;  
\$18.00 per 100

**SPECIAL OFFER No. 19  
Of These 8 Lily-Flowered Tulips**

3 BULBS each (24 bulbs) .....	\$3.25
6 BULBS each (48 bulbs) .....	6.25
25 BULBS each (200 bulbs) .....	23.00

*Lily Flowering*  
**TULIPS**

	Doz.	100
<b>ALASKA.</b> Exquisite long pure yellow flower, with reflexing petals .....	\$1.30	\$10.00
<b>CAPT. FRYATT.</b> Brownish red of immense size .....	1.45	11.00
<b>DON JOSE.</b> Tallest and largest Lily-flowering Tulip, with an extra long blooming period. The color is brilliant scarlet-red, with a pronounced yellow base and yellow stamens .....	2.50	18.00
<b>GOLDEN DUCHESS.</b> A strong plant, producing deep golden yellow blooms, with deep yellow base and golden stamens .....	2.00	15.00
<b>MARIETTA.</b> A completely charming and delightful variety of a color difficult to describe. The flower is a soft shade of lavender-pink, blending into light salmon-pink .....	1.60	12.00
<b>PICOTEE.</b> Snow-white with a margin of rose-pointed and reflexing petals .....	1.30	10.00
<b>STANISLAUS.</b> Lovely flowers of very bright and glittering orange .....	2.00	15.00
<b>WHITE CROSS.</b> Snow-white with broad, slightly ruffled and recurving petals, which are flushed soft green in center. A large, graceful and artistic flower, carried on a strong, tall stem .....	1.45	11.00



**Special \$1.00 Bargains**

**FLOWERS GIVE YOUR HOME A FRIENDLY FACE**

*Guaranteed to Bloom*

**These Offers Are Made to Get More of You Acquainted  
With Our Bulbs**

15 Darwin Tulips. Pure white, graceful .....	\$1.00
20 Darwin Tulips. Soft pink .....	1.00
20 Darwin Tulips. Bright red .....	1.00
20 Darwin Tulips. Dark red .....	1.00
20 Darwin Tulips. Old rose .....	1.00
20 Darwin Tulips. Lavender .....	1.00
15 Darwin Tulips. Bluish black .....	1.00
15 Darwin Tulips. Purple .....	1.00
35 Chionodoxa (Glory-of-the-Snow) .....	1.00
15 Candystick Tulip (Clusiana) .....	1.00
25 Dutch Iris, Mixed .....	1.00
25 Scilla Campanulata, mixed (Wood Hyacinth) .....	1.00
50 Crocus, mixed .....	1.00
15 Trumpet Daffodils, mixed .....	1.00
20 Red Cup Daffodils, mixed .....	1.00
20 Daffodils, General Mixture .....	1.00
50 Muscari, Heavenly Blue .....	1.00

**ANY 3 ONE DOLLAR OFFERS  
FOR \$2.90  
ANY 5 ONE DOLLAR OFFERS  
FOR \$4.50  
YOU MAY ORDER ANY  
QUANTITY**

# Van Bourgondien's World-Ren

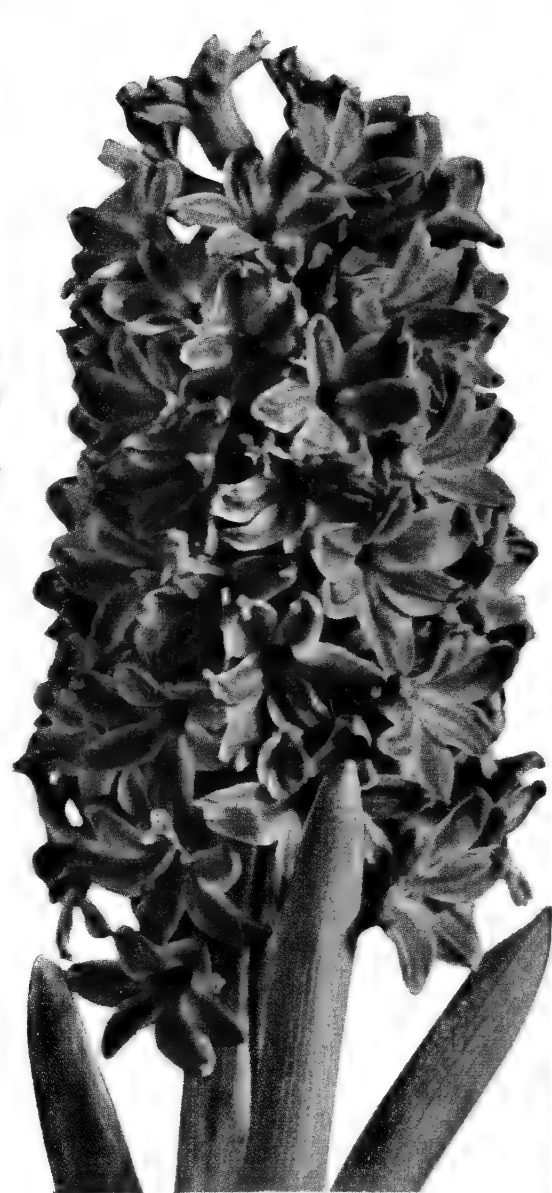
## Real Exhibition Show Garden Varieties



PINK PEARL



L'INNOCENCE



KING OF THE BLUE

### VAN BOURGONDIE'S EXHIBITION HYACINTHS

These are positively the largest bulbs we grow in our Holland nurseries.

**Jumbo Size Prices: 35c each; \$3.85 per doz.; \$30.00 per 100**

#### Single Light and Dark Blue

**BISMARCK.** Bright blue. Fine to force in pots.

**KING OF THE BLUES.** Dark blue; splendid truss. Very fine.

**PERLE BRILLIANTE.** Light blue; erect and perfectly shaped spike.

#### Single Red and Pink Shades

**LADY DÉRBY.** Soft rose; large truss. Fine for pans as well as outdoors.

**LA VICTOIRE.** The finest brilliant scarlet Hyacinth. Very early.

**QUEEN OF THE PINKS.** One of the finest. Good for bedding.

**PINK PEARL.** Deep pink.

#### Single White

**QUEEN OF THE WHITES.** Snow-white. Special for late forcing.

**L'INNOCENCE.** Pure white; large truss; extra fine large bells. Fine bedder and early forcer.

#### Single Yellow

**CITY OF HAARLEM.** Golden yellow. The purest and finest yellow.

**YELLOW HAMMER.** The largest of all yellow Hyacinths. Light yellow; very fine truss.

### EXHIBITION HYACINTHS Special Collection "22"

1	EACH of 4 varieties ( 4 bulbs) all separately labeled .....	\$1.40
3	EACH of 4 varieties (12 bulbs) all separately labeled .....	4.00
1	EACH of 8 varieties ( 8 bulbs) all separately labeled .....	2.70
3	EACH of 8 varieties (24 bulbs) all separately labeled .....	7.50



TRADE MARK REG

# Un-named Hyacinths from Holland

## Special Bedding Hyacinths



The Hyacinths selected for this purpose excel in vigor as well as size of truss, the so-called Un-named Bedding Hyacinths, as these are selected and are consequently very superior. Plant 8 inches apart and with at least 5 inches of soil on top of the bulb. Give them the same treatment as other Hyacinths.

### FINEST SELECTION OF LARGE BEDDING HYACINTHS

Prices: 3 for 75c; \$2.50 per doz.; \$19.00 per 100

#### Single Red and Pink Shades

**LADY DERBY.** Soft rose; large truss. Fine for pans as well as outdoors.

**LA VICTOIRE.** The finest brilliant scarlet Hyacinth. Very early.

**PINK PEARL.** Dark pink; compact truss. Fine for pots or bedding.

**QUEEN OF THE PINKS.** One of the finest.

#### Single White

**QUEEN OF THE WHITES.** Snow-white; special for late forcing.

**L'INNOCENCE.** Pure white; large truss; extra fine large bells. Very fine bedder and early forcer.

#### Single Light and Dark Blue

**BISMARCK.** Bright blue; very fine for forcing in pots.

**KING OF THE BLUES.** Dark blue; splendid truss. Very fine.

**PERLE BRILLIANTE.** Light blue; erect and perfectly shaped spike.

#### Single Yellow

**CITY OF HAARLEM.** Golden yellow. The purest and finest yellow Hyacinth.

**YELLOW HAMMER.** The largest of the yellow Hyacinths. Light yellow, very fine truss.

### Large Bedding HYACINTHS Special Collection "23"

<b>1</b>	EACH of 8 colors (8 bulbs) .....	<b>\$1.85</b>
<b>3</b>	EACH of 8 colors (24 bulbs) .....	<b>4.90</b>
<b>5</b>	EACH of 8 colors (40 bulbs) .....	<b>7.50</b>

For those who want to order only certain colors, see prices below. You may order any color you wish.

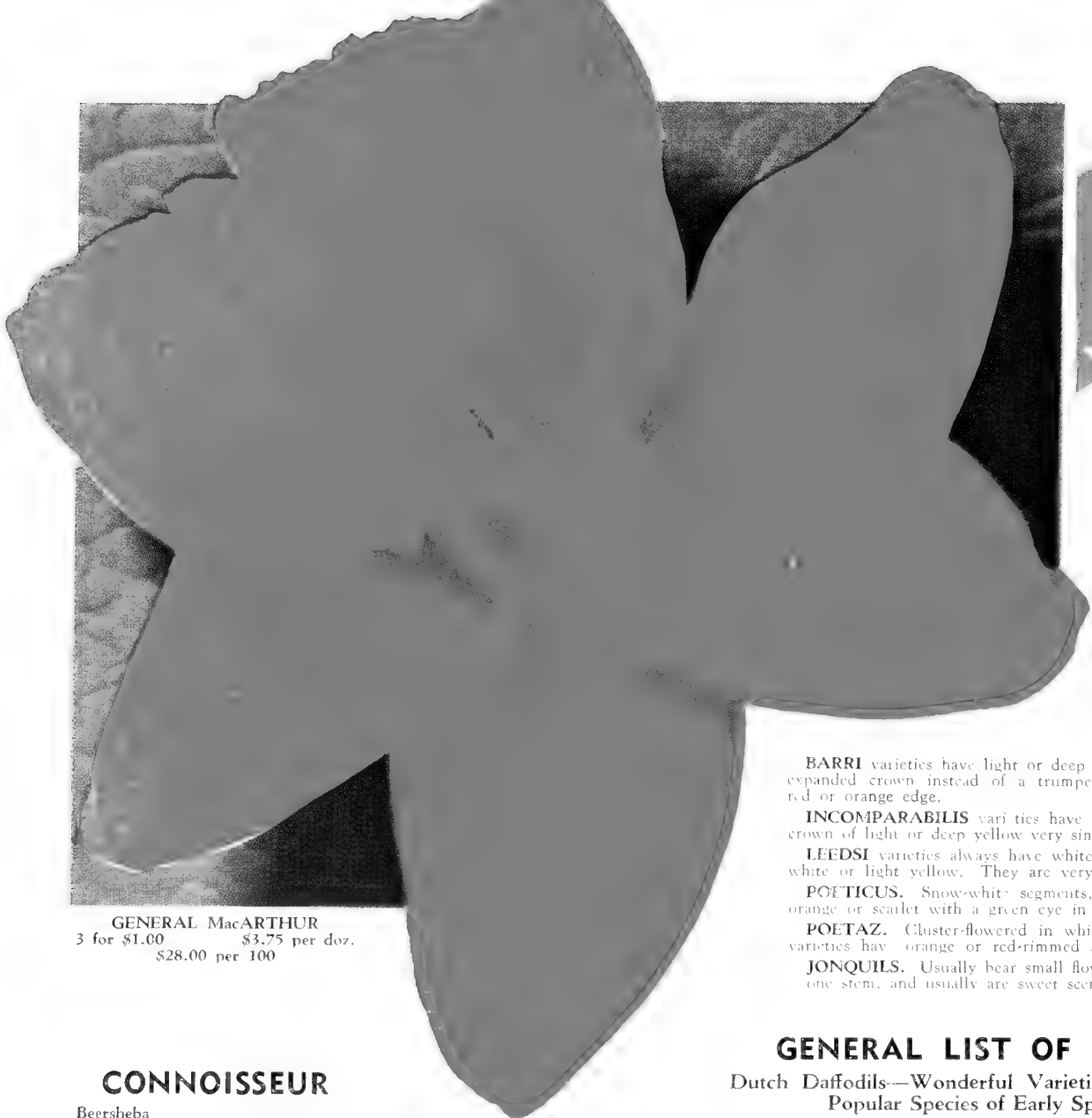
Price: 25c each; \$2.50 per doz.; \$19.00 per 100.

Available in the following colors:

White	Red	Light Blue	Yellow
Soft Rose	Sky-Blue	Purple	Pink



RESERVE THE  
**Show -**  
VAN BOURGONDIE



**Selected Bulbs**

*"Nodding Beauties"  
That Grace Every  
Garden*

**YELLOW TRUMPET** varieties have trumpets which, as a rule, are longer or as long as the perianth segments (petals). They usually have a light or deep yellow perianth with a trumpet of deeper yellow.

**BARRI** varieties have light or deep yellow perianth segments and an expanded crown instead of a trumpet, which is light or deep with red or orange edge.

**INCOMPARABILIS** varieties have light or deep yellow segments, a crown of light or deep yellow very similar to a short trumpet.

**LEEDSI** varieties always have white segments, while the crowns are white or light yellow. They are very dainty.

**POETICUS.** Snow-white segments, crowns usually heavily rimmed orange or scarlet with a green eye in the center of crown.

**POETAZ.** Cluster-flowered in white, light or deep yellow. Some varieties have orange or red-rimmed small crowns.

**JONQUILS.** Usually bear small flowers in small or large clusters on one stem, and usually are sweet scented.

**GENERAL LIST OF DAFFODILS**

Dutch Daffodils—Wonderful Varieties Among the Always Popular Species of Early Spring Flowers.

WE PREPAY ALL SHIPMENTS

**CONNOISSEUR**

- Beersheba
- Dick Wellband
- Geranium
- Gertie Millar
- Magnificence
- Mary Copeland
- Mrs. R. O. Backhouse
- Scarlet Elegans
- Thalia
- White Perfection

**COLLECTION No. 26**

1	EACH of 10 varieties (10 bulbs) .....	\$2.40
3	EACH of 10 varieties (30 bulbs) .....	6.60
6	EACH of 10 varieties (60 bulbs) .....	12.50



MRS. BARCLAY  
3 for 45c      \$1.60 per doz.      \$12.00 per 100

**ABELARD.** (Incomparabilis.) Broad yellow cup, orange tint at edge, and showy orange anthers, supported by broad primrose perianth of exceptionally good substance; beautiful in the unfolding bud and an unusually long lasting flower. 3 for 60c; \$2.00 per doz.; \$15.00 per 100.

**ACTAEA.** (Poeticus.) The largest Poeticus in existence. Broad snow-white perianth and good form; the very large eye is broadly margined with dark red. A most beautiful exhibition flower. 3 for 40c; \$1.30 per doz.; \$10.00 per 100.

**AGRA.** (Incomparabilis.) Large white perianth with vivid scarlet cup. Easily one of the finest garden varieties. 75c each; \$7.50 per doz.

**BEERSHEBA.** (White Trumpet.) First Class Certificate, Birmingham, London, Haarlem shows. Beautifully formed funnel-shaped trumpet, nicely flanged at the mouth, the magnificent perianth is perfectly flat. The whole flower is pure white. 40c each; 3 for \$1.10; \$4.00 per doz.; \$30.00 per 100.

**CAMPERNELLE ODORUS RUGULOSUS.** (Jonquil.) Small clusters of golden yellow flowers. 3 for 30c; \$1.00 per doz.; \$7.50 per 100.

**CARLTON.** (Incomparabilis.) Broad overlapping perianth with a large expanded yellow cup. One of the finest Daffodils. 3 for 60c; \$2.00 per doz.; \$15.00 per 100.

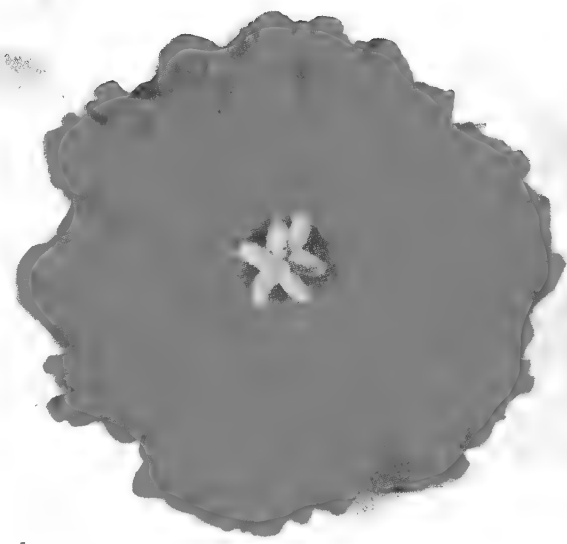
**CHEERFULNESS.** (Double.) A double form of the famous cluster-flowered Daffodil, Elvira. 3 for 30c; \$1.10 per doz.; \$8.50 per 100.

**CROESUS.** (Incomparabilis.) Most attractive and striking. The cup is a rich orange color, with an almost scarlet rim; the perianth is creamy white. 3 for 35c; \$1.25 per doz.; \$9.50 per 100.

**DAWSON CITY.** (Incomparabilis.) Much overlapping and flat perianth with a very smooth trumpet, nicely flanged at the mouth. This perfect flower is golden yellow throughout. Great favorite in England. 3 for 70c; \$2.25 per doz.; \$17.00 per 100.



BEST SPACE IN YOUR GARDEN FOR  
**Garden Narcissus**  
 NEW IMPORTED FLOWERING BULBS



**SCARLET LEADER**  
 75c each; 3 for \$2.00;  
 12 for \$7.50

**DICK WELLBAND.** (Incomparabilis.) Very strong grower and exceptionally free-flowering. The perianth is pure white and the cup flame-orange. One of its most remarkable qualities is that the color does not fade but rather intensifies with age. The flower lasts unusually long and we believe that this variety will be of the greatest value both for greenhouse work and for outside. Its great beauty lies in the startling contrast between petals and cup which makes it stand out in the largest collection of Daffodils. 3 for 60c; \$2.00 per doz.; \$15.00 per 100.

**FIRETAIL.** (Barri.) First Class Certificate, Birmingham, London, and Haarlem Shows. Large, overlapping, ivory-white perianth of splendid substance with a flat eye of deep blood-red, holds its color very well. 3 for 40c; \$1.30 per doz.; \$10.00 per 100.

**FORTUNE.** (Incomparabilis.) First Class Certificate, Birmingham, London and Haarlem Shows. A great Incomparabilis of perfect form and splendid color. Perianth clear yellow; cup coppery blood-orange throughout. Most outstanding variety of the past few years. Each 25c; 3 for 70c; \$2.50 per doz.

**FRANCISCA DRAKE.** (Incomparabilis.) Pure white perianth of unusual substance, cup golden yellow at base shading to flamed orange at frilled edge. 3 for 50c; \$1.70 per doz.; \$13.00 per 100.

**MONTE CARLO**  
 3 for 60c; \$2.00 per doz.; 100 for \$15.00



**GENERAL MacARTHUR.** (Trumpet.) In our opinion the largest and finest golden yellow Daffodil of enormous size and good form which leaves nothing to be desired. Late flowering, blooming after all other Trumpets are through. 3 for \$1.00; \$3.75 per doz.; \$28.00 per 100.

**GERTIE MILLAR.** (Leedsi.) Wonderful flower of the new Giant Leeds type with pure white perianth similar to and as large as Van Waveren's Giant; a beautifully proportioned pale primrose cup deeply fluted and frilled, and of translucent texture. 3 for 65c; \$2.25 per doz.; \$17.00 per 100.

**GERANIUM.** (Poetaz.) A variety well worth growing, being beautiful in every respect. The pure white perianth is round and flat, more than 2 1/2 inches across. The cup is very brilliant orange-scarlet. The tall stems carry 3 to 5 flowers. 3 for 45c; \$1.60 per doz.; \$12.00 per 100.

**GOLDEN HARVEST.** (Yellow Trumpet.) Undoubtedly one of the largest Trumpet varieties in existence. The perianth is well formed and overlapping. The trumpet is of good shape and proportion, rolled back at the brim. Color is deep golden yellow. 3 for 60c; \$2.00 per doz.; \$15.00 per 100.

**GOLDEN SCEPTRE.** (Jonquil.) Deep golden yellow flowers of great substance, star-shaped perianth. 3 for 30c; \$1.00 per doz.; \$7.50 per 100.

**HALVOSE.** (Poetaz.) Red of the crown suffuses into perianth which is clear yellow flushed coppery red; crown bright red; numerous flowers on stem. Remarkable for its color. 3 for 45c; \$1.60 per doz.; \$12.00 per 100.

**HAVELOCK.** (Incomparabilis.) Bright self-yellow, wide and even perianth segments finely proportioned, good quality and stem. 3 for 45c; \$1.60 per doz.; \$12.00 per 100.

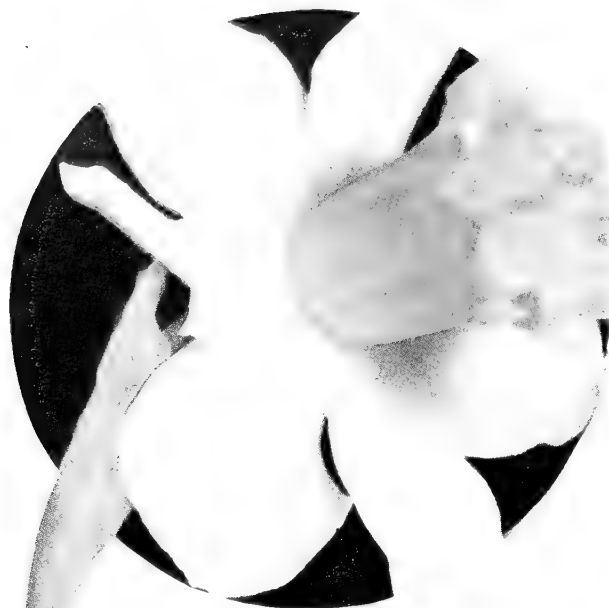
**GARDEN DAFFODIL COLLECTION No. 24**

Croesus Cheerfulness	Firetail Helios	Killegrew Laurus Koster Whistler	Lady Diana Manners	Magnificence The First	
3	EACH of 10 varieties (30 bulbs)				\$4.10
6	EACH of 10 varieties (60 bulbs)				7.40
12	EACH of 10 varieties (120 bulbs)				14.00



# Holland's Premium The English Name

VAN BOURGONDIE'S SELECTIONS FOR



MRS. R. O. BACKHOUSE  
50 each; 3 for \$1.40;  
\$5.25 per doz.

## EXHIBITION DAFFODIL COLLECTION No. 25

Francisca Drake	Inglescombe (Dbl.)	King Alfred
Havelock	Insurpassable	Mrs. Barclay
Halvose	John Evelyn	Monique
	Roxane	

1	EACH of 10 varieties (10 bulbs) .....	2.00
3	EACH of 10 varieties (30 bulbs) .....	5.75
6	EACH of 10 varieties (60 bulbs) .....	10.75

**HELIOS.** (Incomparabilis.) Extra fine, large flowers, sulphur perianth, yellow cup, tinged orange. One of the finest in this class. A valuable variety for forcing and cutting. Highly recommended. 3 for 40c; \$1.30 per doz.; \$10.00 per 100.

**INSURPASSABLE.** (Trumpet.) A huge deep butter-yellow Trumpet Daffodil, early blooming. Good for show purposes. 3 for \$1.20; \$4.50 per doz.

**JOHN EVELYN.** (Incomparabilis.) Fine exhibition flower. Broad, creamy white perianth; cup pale apricot-orange. 3 for 45c; \$1.60 per doz.; \$12.00 per 100.

**KILLEGREW.** (Incomparabilis.) Well overlapping bright yellow perianth and a large bright orange-red cup. A flower of wonderful quality and perfect exhibition form. 3 for 60c; \$2.00 per doz.; \$15.00 per 100.

## DOUBLE DAFFODILS

**CAMPERNELLE ODORUS.** The tall double Campernelle Jonquil, a very charming variety, bearing on tall graceful stems heads of fragrant double yellow flowers of elegant form; height 15 inches. An attractive pot and border plant, and will bear gentle forcing. 3 for 30c; \$1.00 per doz.; \$7.50 per 100.

**CHEERFULNESS.** (Gardenia Daffodil.) A fine double white Poetaz; perianth creamy white, cup creamy yellow. 3 for 50c; \$1.10 per doz.; \$8.50 per 100.

**INGLESCOMBE.** Of pure yellow, resembling a yellow Rose. 3 for 50c; \$1.70 per doz.; \$13.00 per 100.

**INSULINDE.** (Double.) A large, well-shaped double flower composed of many creamy white petals of good size. Interspersed between these are somewhat shorter but brilliant orange-scarlet inner petals. In our opinion this is one of the best of the double Daffodils of the so-called Pompon type blooms. Fine flowering and very colorful. 3 for 75c; \$2.75 per doz.; \$20.00 per 100.

**MARY COPELAND.** Outer petals white, center deep orange-red. 3 for 80c; \$2.75 per doz.; \$20.00 per 100.

**TWINK.** Petals of soft primrose and clear orange, very attractive. 3 for 60c; \$2.00 per doz.; \$15.00 per 100.

**VON SION.** Double golden yellow flowers. 3 for 45c; \$1.50 per doz.; \$11.50 per 100.

**KING ALFRED.** (Yellow Trumpet.) Very large and sturdy golden yellow flowers. One of the best. 3 for 45c; \$1.60 per doz.; \$12.00 per 100.

**LADY DIANA MANNERS.** (Barri.) A very striking flower, with broad, pure white perianth and widely expanded yellow crown, broadly margined with deep red. Long stems and strong grower. 3 for 45c; \$1.60 per doz.; \$12.00 per 100.

**LAURENS KOSTER.** (Poetaz.) White perianth, delicate orange cup. 3 for 30c; \$1.10 per doz.; \$8.50 per 100.

**LORD WELLINGTON.** (Trumpet.) This glorious Daffodil is the best of all yellow Trumpets ever brought on the market. The enormous flower of self rich golden yellow, with broad massive petals and immense trumpet, is carried on a tall and long stem. It is a most valuable variety for February forcing and lasts a long time cut or in pots. An exquisite novelty, which should be included in every good collection. 3 for 65c; \$2.15 per doz.; \$16.00 per 100.

**MAGNIFICENCE.** (Yellow Trumpet.) Early yellow Trumpet; opens very early. A large, showy, deep golden yellow flower of decorative outline. 3 for 45c; \$1.60 per doz.; \$12.00 per 100.

**MARION CRAN.** (Incomparabilis.) Medium size. Perianth deep yellow, cup pale orange. Medium late. 3 for 45c; \$1.60 per doz.; \$12.00 per 100.

**MRS. BARCLAY.** (Red Cup.) Large flower with flat, reflexed, broad-petaled, overlapping perianth of pale primrose coloring to pure white; deeply frilled flat cup of primrose-yellow, with dainty orange picotee; extremely showy and a great favorite in the garden. 3 for 45c; \$1.60 per doz.; \$12.00 per 100.

**MRS. R. O. BACKHOUSE.** (Leeds.) The well known pink Daffodil. Perianth ivory-white; long trumpet, apricot-pink, fringed edge. Each 50c; 3 for \$1.40; \$5.25 per doz.; \$40.00 per 100.

**MRS. E. H. KRELAGE.** (Trumpet.) One of the finest pure white Daffodils; well formed perianth and bold, imbricated trumpet. Highly recommended for moderate forcing. 3 for 60c; \$2.00 per doz.; \$15.00 per 100.

**MONIQUE.** (Incomparabilis.) Giant flower, white perianth opening flat star-shaped, with individual petals over 1½ inches wide; broad yellow cup with blood-orange frill; strong grower, fine substance and wonderfully free flowering. 3 for 70c; \$2.50 per doz.; \$18.00 per 100.

**MONTE CARLO.** (Incomparabilis.) Large flower of perfect form, with broad, overlapping, flat perianth and cup deep yellow. 3 for 60c; \$2.00 per doz.; \$15.00 per 100.

**MT. EREBUS.** (White Trumpet.) One of the most popular of the new white trumpets; pure cream-white perianth with a pale primrose trumpet; a strong grower; very tall; a fine propagator; a strong show flower. 3 for 60c; \$2.00 per doz.; \$15.00 per 100.

**ORANGE GLOW.** (Incomparabilis.) Yellow perianth, of good substance, flaring trumpet, yellow with orange glow, rather frilled at edge. 3 for 65c; \$2.15 per doz.; \$16.00 per 100.

INGLESCOMBE  
3 for 50c; \$1.70 per doz.;  
\$13.00 per 100





# VAN BOURGONDIEBROS., Inc.

Babylon, Long Island, N. Y.

DO NOT WRITE IN THESE SPACES

Zone

Date Dec'd

Order No.

D.O.---

Shipped Via

Shipping Cost

Date Shipped

Remittance

Ship To: M.....  
(Please print your Name and Address plainly)

Street and No. .... Box .....

Post Office ..... Zone ..... R. F. D. ....

State ..... Amount Enclosed \$ .....

Express Office .....  
(Only if different from Post Office)

**FREE DELIVERY:** All orders for bulbs or plants, or both, listed in this catalog, and accompanied by payment in full will be sent prepaid to any address in the U.S.A., by parcel post, express or freight, whichever way is considered most convenient to the customer or shippers.

**GUARANTEE:** We, Van Bourgondien Bros., Inc., guarantee the bulbs and plants purchased from us to be exactly as described in our literature and in perfect condition at time of shipment. Any error in shipments should be reported immediately.

**NO C.O.D. ORDERS PLEASE—ALL OVER-PAYMENTS PROMPTLY REFUNDED**

Quantity	Name of Variety or Collection Number	Price
Cultural Directions Will Be Sent With Each Order		
<b>F-49</b>	Use Other Side to List Additional Items	TOTAL or Amount Carried Forward



# Quality Daffodils..

## For Narcissus

### FINE FORM, COLOR AND PERFORMANCE

**QUEEN OF THE BICOLOR.** (Large Trumpet.) The best contrasting bicolor Daffodil. Pure white perianth, deep golden yellow trumpet. 30c each; 80c per 3; \$3.00 per doz.

**RED CROSS** (Incomparabilis.) Flowers of great size, with very broad, flat, primrose-yellow perianth of firm substance; crown very large, of glowing-scarlet color, well open at the mouth, and elegantly crimped at the brim. This is a splendid exhibition variety that should be included in every fine collection. 3 for 50c; \$1.70 per doz.; \$13.00 per 100.

**ROXANE.** (Trumpet.) Creamy white overall; huge flower. Show variety. 3 for 90c; \$3.25 per doz.; \$25.00 per 100.

**SCARLET ELEGANCE.** (Incomparabilis.) Medium size. Perianth deep yellow, cup deep orange-red. Medium early. New. 3 for 60c; \$2.00 per doz.; \$15.00 per 100.

**SCARLET LEADER.** (Incomparabilis.) White perianth with large, bright red cup. This is one of the best red cups produced in Europe. Red cup never fades, stays red until end. Can be forced very early. Early 75c; 3 for \$2.00; \$7.50 per doz.

**SEMPER AVANTI.** (Incomparabilis.) Very large, flat and overlapping soft sulphur-white perianth; the enormous and spreading crown is deep orange throughout. Very strong flower; vigorous plant and highly recommended 20c each; 55c for 3; \$2.00 per doz.

**SILVER STAR.** (Giant Leeds Trumpet.) White perianth, pale canary-yellow trumpet. 20c each; \$2.00 per doz.; \$15.00 per 100.

**THALIA.** (Triandrus.) An exquisite flower with three or four pure white flowers on one stem. This variety forms a class of its own. Because of its great resemblance to an Orchid it is known as the Orchid Narcissus. Very good forcer. 3 for 70c; \$2.50 per doz.; \$18.00 per 100.

**THE FIRST.** (Trumpet.) The earliest of all yellow Trumpets. Will bloom one week ahead of King Alfred. Slightly paler yellow. 3 for 50c; \$1.70 per doz.; \$13.00 per 100.

**TUNIS.** (Leeds.) A large, tall, robust growing Leeds of most distinct character and great lasting substance; broad, waved white perianth and large, bold, ivory crown with handsome, flanged and serrated brim, retaining a remarkable flush of pale coppery gold at the edge. 3 for 80c; \$2.65 per doz.; \$20.00 per 100.

**WHISTLER.** (Trumpet.) Enormous flower with deep yellow trumpet, well opened; perianth pale yellow with outer petals exceptionally broad and inner ones usually slightly twisted, making the flower more graceful. 3 for 65c; \$2.15 per doz.; \$16.00 per 100.

**WHITE PERFECTION.** (Poetaz.) A very large flower, with strong, flat, pure white perianth and deep orange-red eye. Each stem carries from 4 to 6 flowers. 3 for 45c; \$1.70 per doz.; \$13.00 per 100.

**CHEERFULNESS.** 3 for 30c; \$1.10 per doz.; \$8.50 per 100



**SCARLET ELEGANCE**  
3 for 60c; \$2.00 per doz.;  
\$15.00 per 100



TRADE MARK REG.

Always Premium Quality

### NEW AND RARE COLLECTION No. 27

Abelard	Monte Carlo
Agra	Mt. Erebus
Gen. MacArthur	Scarlet Leader
Fortune	Semper Avanti

<b>1</b>	EACH of 8 varieties (8 bulbs) .....	<b>\$2.75</b>
<b>3</b>	EACH of 8 varieties (24 bulbs) .....	<b>8.00</b>
<b>6</b>	EACH of 8 varieties (48 bulbs) .....	<b>14.25</b>

**FRANCISCA DRAKE**  
3 for 50c; \$1.70 per doz.;  
\$13.00 per 100



# Plant Daffodils

To Grow Like Wildflowers

## Daffodils

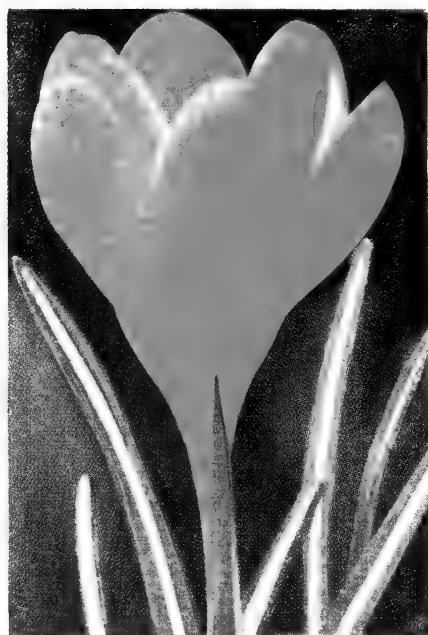
Hundreds of thousands of Daffodils are used yearly for this purpose, because when once planted, they continue to give you immeasurable joy year after year. Numerous varieties have proved very successful for this purpose and we will use no others. Practically all types of Daffodils contain some varieties suitable for this purpose, thereby increasing the number of varieties and adding greatly to the desire of naturalizing Daffodils.

### Naturalizing Daffodils

**GENERAL MIXTURE** including all best types—Red Cups, Trumpets, Campernelles, etc. 25 for \$1.50; 100 for \$5.50; 1000 for \$50.00.

**RED CUP MIXTURE** consists of varieties either Red Cups or Red Eyes. 25 for \$1.50; 100 for \$5.50; 1000 for \$50.00.

**ALL YELLOW TRUMPETS** including King Alfred, Emperor, other fine varieties. Top grade bulbs, 5- to 7-inch circumference. 25 for \$1.65; 100 for \$6.00; 1000 for \$55.00.



# THE BEST CROCUS

Come From Van Bourgondiens

All Holland Grown, Large Flowering Varieties

Lovely and Brilliant Colors That Always Herald the Coming of Spring Flowers

Large Flowering—Enduring Colors

### Holland Grown Giant Crocus

These Crocus are so far superior in size and beauty we feel sure that the older strain will disappear from the market. The bulbs offered here are Top Size, grown in our Holland Nurseries.

**VANGUARD.** Deep lavender.

**GIANT YELLOW.**

**THE SULTAN.** Deep purple; extra large.

**JUBILEE.** Bright mauve-blue.

**SNOW STORM.** Pure white.

**REMEMBRANCE.** Sky-blue, rich flowering.

**STRIPED BEAUTY.** Dark striped.

**Prices: 50c per doz.; \$3.50 per 100; \$32.00 per 1000**

### Crocus Special Offer "29"

These will be supplied in the following colors: White, blue striped, light blue, dark blue, yellow. Each color labeled. Every bulb guaranteed to bloom. Or, your choice of color.

6 EACH of 5 colors (30 bulbs) ..... \$0.80

12 EACH of 5 colors (60 bulbs) ..... 1.50

25 EACH of 5 colors (125 bulbs) ..... 2.80

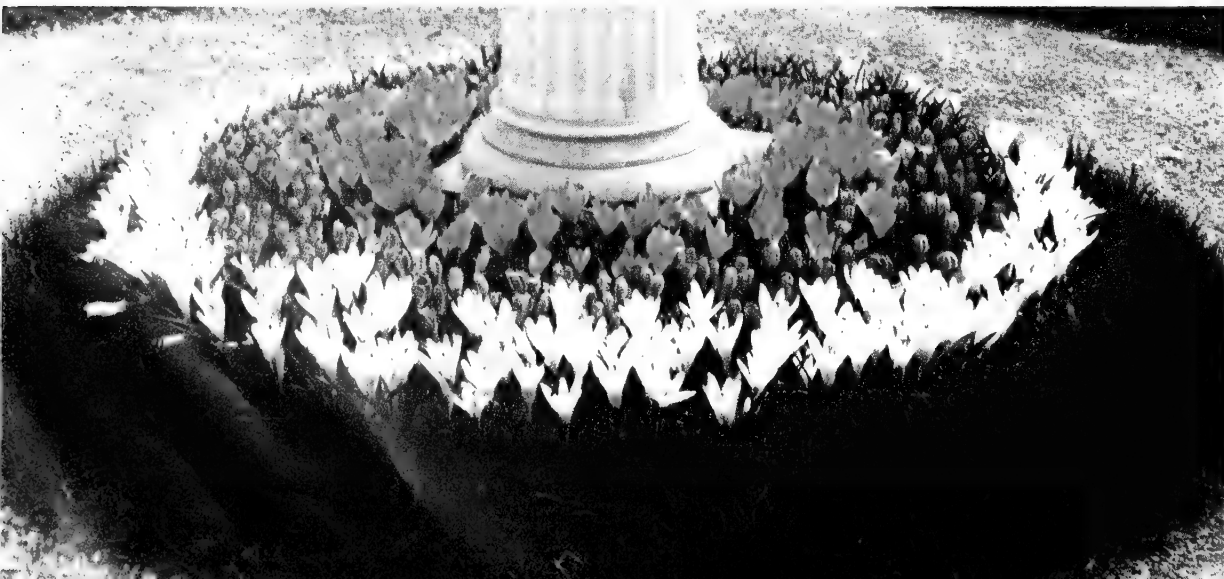
### MIXED CROCUS Special Bargain Offer

Guaranteed to Bloom

25 for 50c

\$1.80 per 100

\$16.00 per 1000





## 2 Leaders for Outdoor Planting



FRITILLARIA IMPERIALIS

### The Great Madonna, or Lilium Candidum

This is the exquisite *Madonna Lily*, which produces a large mass of snow-white flowers on straight stems. Plant these bulbs in the open in September or October.

**Jumbo bulbs.** 65c each; \$6.50 per doz.; \$50.00 per 100.

**First size bulbs.** 45c each; \$4.50 per doz.; \$35.00 per 100.

### Fritillaria Imperialis

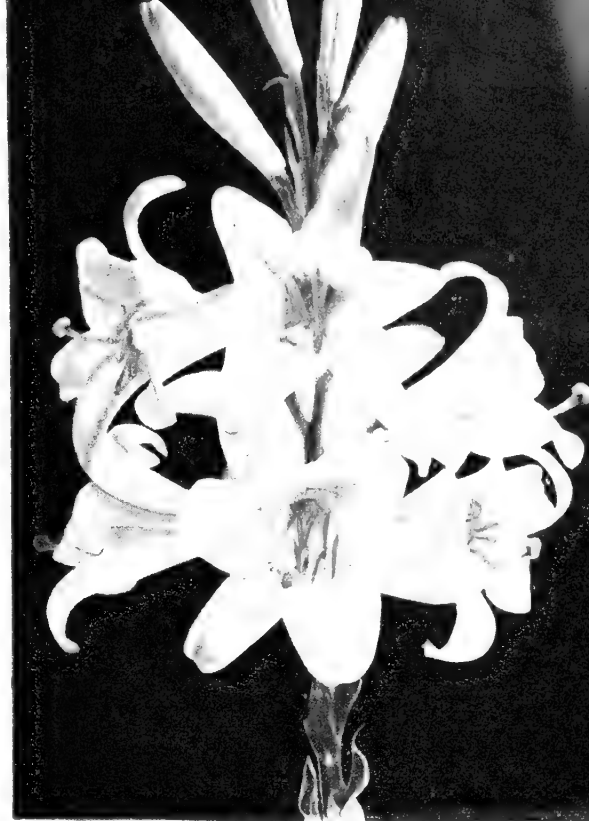
(Crown Imperial)

This unique and most attractive flower derives most of its name from the crown-shaped flower, as shown in the illustration. The original species grew wild in English meadows, and the present form is excellent for naturalizing as well as for the garden or border. It blooms in May and June. Children admire the pearly drops of nectar found in the chalice.

For best results, the bulbs should be planted during September.

**RED.** 75c each; \$8.00 per doz.

**YELLOW.** \$1.20 each; \$12.00 per doz.



LILIUM CANDIDUM

## Bulbs for Indoor or Pot Culture

### Amaryllis Hippeastrum Giant Hybrids

Each 70c; \$7.00 per doz.

These Giant Amaryllis are for indoor culture only. They are available from November 15th until the end of April. The colors vary from white striped with pink or red to dark red. We offer these Giant Hybrids as a **mixture only**. They are our best seedlings. We guarantee complete satisfaction with every Giant Amaryllis bulb.

### Iris Reticulata

It can be described as a small form of the Spanish or Dutch Iris. Its main value lies in the fact that it may be forced into bloom in the house with the greatest ease. Six bulbs put into a 4-inch pot when received will bloom at Christmas time. The fragrant blossoms remind one of a bunch of fresh Violets. Hardy with reasonable protection. It is one of the loveliest early flowering bulbs for the rock garden. \$1.25 per doz.; \$9.00 per 100.

### Paper-White Narcissus

Suitable for Growing in Water and Gravel, Sand, or Fiber

We handle only the **Giant Grandiflora** variety, which is a great improvement over the ordinary Paper-White. It can be had in bloom for Christmas until Easter, either in pots, bowls, or boxes. **Jumbo or Exhibition Size:** 3 for 35c; \$1.10 per doz.; \$8.00 per 100; \$70.00 per 1000.

### Soleil d'Or Narcissus

Soleil d'Or resembles the Paper-White Narcissus very much in habit, but is of an exquisite deep yellow color, with an orange-yellow cup. The culture is the same as for the Paper-White Narcissus.

We offer only the **Exhibition Size:** 3 for 45c; \$1.60 per doz.; \$12.00 per 100.

### French Roman Hyacinths

French Roman Hyacinths are among the earliest bulbs to be had in flower. They may be had in flower from November all through the winter months, if potted up in September and at intervals of every two weeks.

**White.** Jumbo bulbs, 3 for 95c; \$3.50 per doz.

**Pink.** Jumbo bulbs, 3 for 90c; \$3.00 per doz.

**Blue.** Jumbo bulbs, 3 for 90c; \$3.00 per doz.



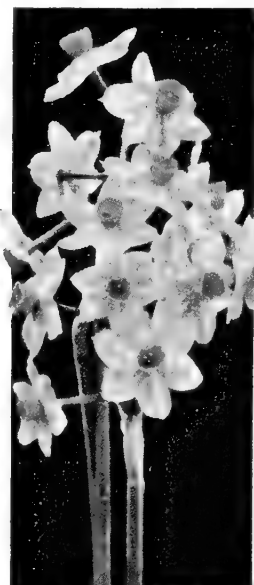
GIANT AMARYLLIS



IRIS RETICULATA



PAPER-WHITE NARCISSUS



SOLEIL D'OR NARCISSUS



FRENCH ROMAN HYACINTH

# Miscellaneous Bulbs for



MERTENSIA (Virginia Blue Bells)

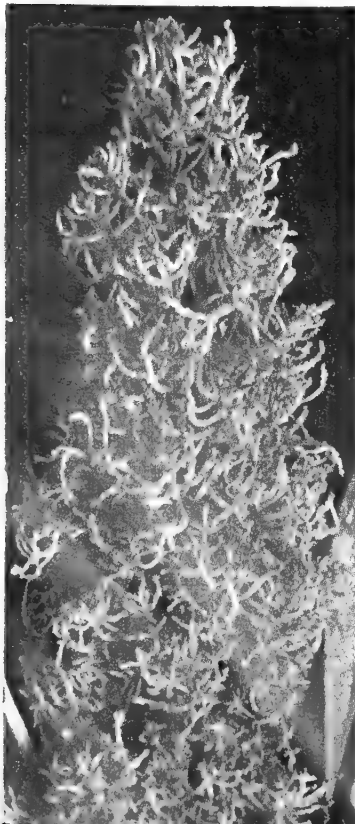
## Mertensia Virginica (Virginia Blue Bells)

A beautiful hardy perennial that should be planted with Daffodils for contrast. Buds are pink, opening into lovely, dainty flowers of porcelain-blue, in nodding clusters. This beautiful flower starts blooming with Daffodils and lingers to trade with the May-Flowering Tulips. Delightful in the open border or along woody paths. Each 30c; \$2.75 per doz.; \$21.00 per 100.

## Muscari

**PLUMOSUM** (Plume Hyacinth). Flowering in May. Beautiful feathery plumes of violet-blue. Height 8 in. We strongly recommend this variety for your garden. Very unusual type of Muscari. 70c per doz.; \$5.00 per 100.

MUSCARI PLUMOSUM



SNOWDROP

## Snowdrops (Galanthus)

Everybody knows the Snowdrops; with their little white bells coming through the snow; practically the first flower to show itself after the dreariness of winter. Wonderful for naturalizing and for the rock garden. **NIVALIS**. (Single.) 75c per doz.; \$5.50 per 100. **NIVALIS**. (Double.) 90c per doz.; \$6.50 per 100.

## Rock Garden Collection No. 6

Pictured on pages 20 and 21.

Muscari, Blue Bird	Scilla sibirica	Single Snowdrops
Muscari, plumosum	Fritillaria meleagris	Leucojum vernum
Scilla camp., Mixed	Chionodoxa	Eranthis
<b>6</b> EACH of above		<b>\$2.80</b>
9 varieties .....		
<b>12</b> EACH of above		<b>5.40</b>
9 varieties .....		
<b>25</b> EACH of above		<b>9.95</b>
9 varieties .....		

## Scilla Sibirica

Scilla sibirica naturalize splendidly, are cheap and so can be planted liberally. **SIBIRICA, BLUE**. 60c per doz.; \$4.50 per 100; 1000, \$47.00. **SPRING BEAUTY**. A glorified Scilla, "Sibirica Blue." The color is much clearer blue; taller stems with 5 to 6 flowers from one bulb. 85c per doz.; \$6.00 per 100; \$57.00 per 1000.



SCILLA SIBIRICA, SPRING BEAUTY



SCILLA CAMPANULATA  
ROSE QUEEN SKY BLUE QUEEN

## Scilla Campanulata (Wood Hyacinth)

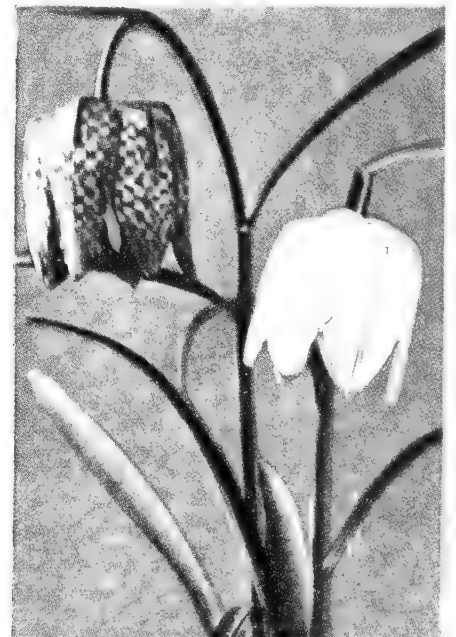
All the varieties of Scilla campanulata are splendid for naturalizing because they will flower in shady places. All have bells like small Hyacinths, forming long, graceful spikes.

**CAMPANULATA, WHITE QUEEN**. Large, pure white. 60c per doz.; \$4.50 per 100.  
**BLUE QUEEN**. Large, bright blue. 60c per doz.; \$4.50 per 100.  
**ROSE QUEEN**. Soft lilac-rose. 60c per doz.; \$4.50 per 100.

## Fritillaria Meleagris

Singular, dwarf, spring flowering plants, bearing large, pendent, bell-shaped flowers of various colors, in yellow, white, black, purple, striped and splashed, and checkered in the most curious way. They are invaluable for pot culture, and exceedingly pretty when grown in large groups in the garden border or wild garden in a dry situation.

**MIXED**. Select mixtures. 45c per doz.; \$4.00 per 100; \$37.00 per 1000.

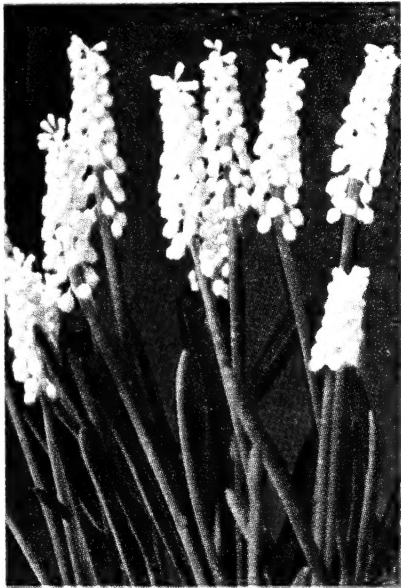


FRITILLARIA MELEAGRIS

VAN BOURGONDEN BROS., INC.



# Border and Rockery



MUSCARI, WHITE BEAUTY

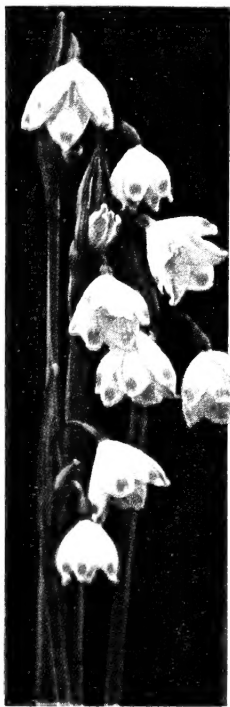
## White Beauty

In the past the white Muscari was always a very small flower and produced a very small bulb. This new introduction produces large flowers, pure white. The bulbs are considerably larger than the old type Muscari. \$1.00 per doz.; \$7.50 per 100.

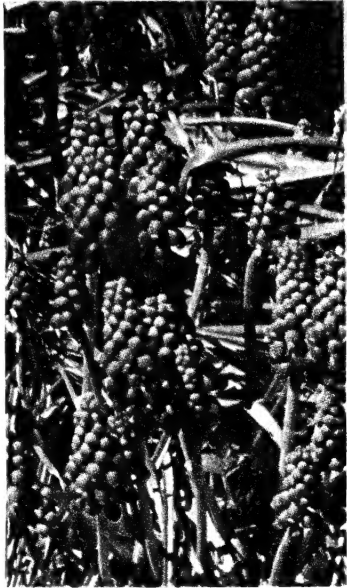
## Leucojum Vernum

(Spring Snowflake)

This pretty bulbous plant is similar to the Snowdrop but of larger, stronger and more attractive habit. In rich soil it grows to a height of 8 inches and produces in late April, beautiful large white flowers, tipped with green; excellent for cutting. \$1.00 per doz.; \$7.50 per 100.



LEUCOJUM  
(Spring Snowflake)



MUSCARI, BLUE BIRD

## Muscari

(Grape Hyacinth)

**BLUE BIRD.** An immense improvement over all other varieties; the flowers being twice as large and growing taller, of a delightful heavenly blue. 60c per doz.; \$4.50 per 100.

The varieties included in all collections listed in this book will be shipped separately labeled and packed.

## Chionodoxa

(Glory-of-the-Snow)

An early flowering spring bulb for borders or rockery. Produces flower spikes bearing 10 to 15 Scilla-like flowers. Perfectly hardy, should be planted close together for effect.

**LUCILIAE.** Deep blue, with a white center. Selected mother bulbs. 50c per doz.; \$3.50 per 100; \$32.00 per 1000.

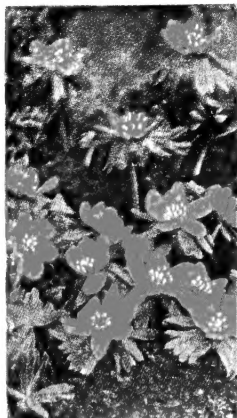


CHIONODOXA

## Eranthis Hyemalis

(Winter Aconite)

Early in spring the golden blossoms look charming, resting on an emerald-green cushion of leaves and forming a striking contrast to the Snowdrops, Scillas and Chionodoxas. The foliage remains long after the flowers, making the plant especially valuable in moist situations, such as under trees, which the Winter Aconite enjoys, and where few other flowering plants will thrive. 3 to 8 inches high. 50c per doz.; \$3.50 per 100; \$32.00 per 1000.



ERANTHIS HYEMALIS



DUTCH IRIS

## Dutch Iris (Bulbous)

(For outdoor planting only)

**BRONZE QUEEN.** Very beautiful shade of bronze. Highly recommended. 85c per doz.; \$6.00 per 100.

**GOLDEN HARVEST.** Pure yellow. 70c per doz.; \$5.00 per 100.

**IMPERATOR.** Rich dark blue. Very large. 60c per doz.; \$4.50 per 100.

**WHITE SUPERIOR.** New pure white. 85c per doz.; \$6.00 per 100.

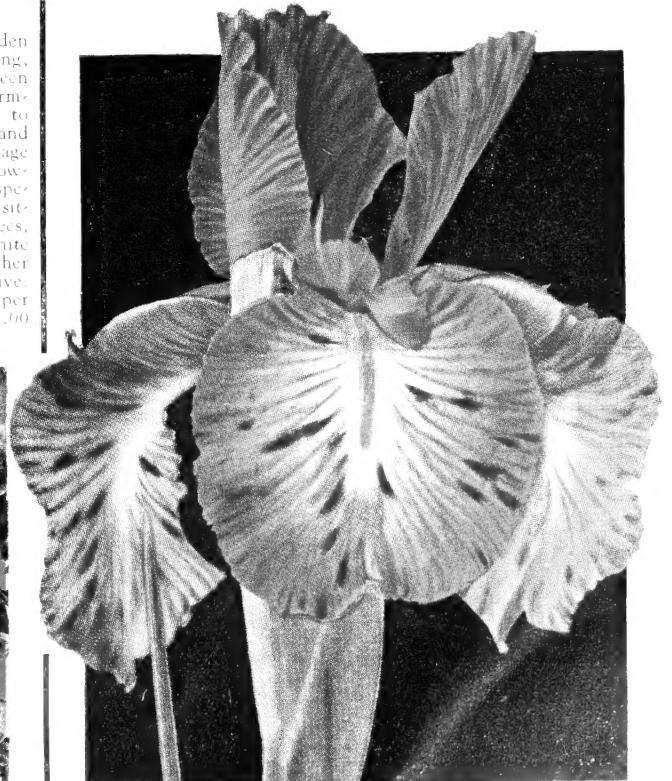
**DUTCH IRIS MIXED.** 55c per doz.; \$4.00 per 100.

## English Iris (Bulbous)

(For Outdoor Planting Only—Mixed Colors)

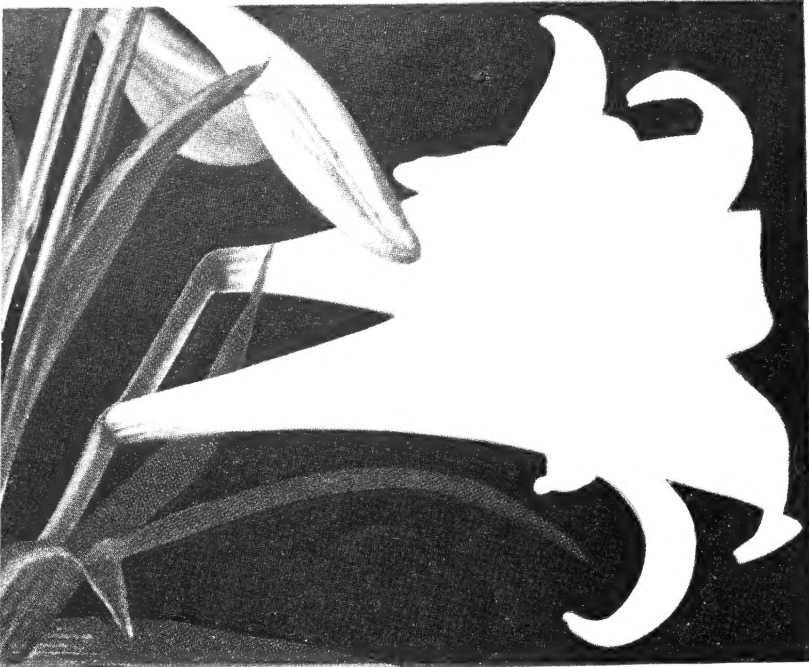
Although called English Iris, this lovely bulbous Iris originally came from the alpine meadows of the Pyrenees. In the sixteenth century it made itself at home in England, hence its name. It is extremely hardy and loves a cool, moist soil.

Iris can be grown to perfection. Price: \$1.25 per doz.; \$9.00 per 100; \$85.00 per 1000.



ENGLISH IRIS

# Premium Quality Garden Lilies



**ESTATE LILY (Easter Lily)**

(July-August Blooming)

No Lily that we have offered to the public has met with as much popular acclaim as the lovely Estate Lily. Pure white and extremely hardy it is the only true hardy Easter Lily. Our bulbs are the genuine Estate strain from Oregon. 50c each; \$5.00 per doz.



**ORANGE TRIUMPH (The New Lily)**

One of the newer Lilies, a hybrid Umbellatum X Croceum. Beautiful orange-yellow chalice on 5-foot stems. June blooming, it makes a splendid subject for mass effects in the border. 40c each; \$4.00 per doz.



**HENRYI**

A splendid garden lily, vigorous in its growth, falling very seldom. One of the best border lilies, reaching 6 feet or more in height when established and bearing more than 20 flowers of a rich, deep orange-yellow. Fine foliage. Does well in any soil and heavy loam, but prefers soil with a mixture of peat. Plant very nice, 19 inches. A partially shaded place, sheltered from high winds, suitable. 40c each; \$4.00 per doz.

**LILY  
COLLEC-  
TION No. 28  
SPECIAL OFFER  
OF**

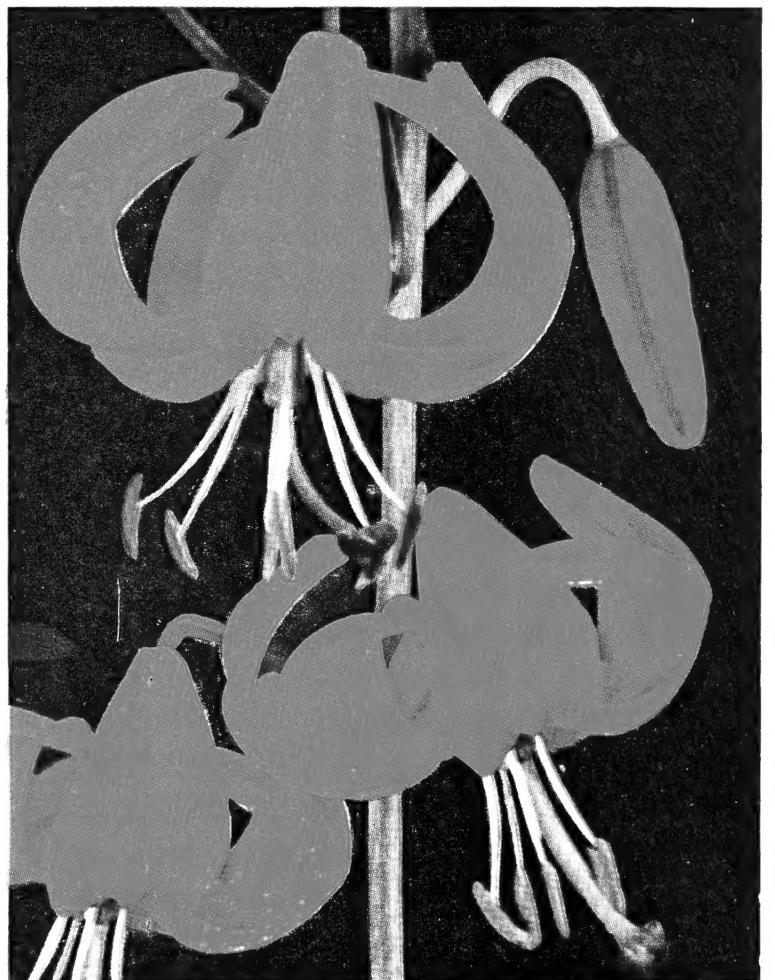
**9 HARDY LILIES**

Pictured on pages 22-23.

**1 Each of 9 Varieties \$3.60**

**3 Each of 9 Varieties 10.00**

**6 Each of 9 Varieties 18.50**



**GOLDEN GLEAM (Tenuifolium Type Lily)**

30c each; \$3.00 per doz.



Premium  
Quality

# Garden Lilies



## REGALE

From Western China, one of the most beautiful of Lilies. It grows 3 to 5 feet high, blooms out-of-doors in July, is perfectly hardy, and flourishes under very varied conditions. The large, trumpet-shaped, delightfully scented flowers, produced freely, are ivory-white shaded pink, tinged canary yellow in throat. Fine for forcing.

	Each	Doz.
Jumbo .....	\$0.75	\$7.50
Large .....	.35	3.50
Medium, (Will bloom with three flowers.) .....	.20	2.00

All sizes will bloom.



## TENUIFOLIUM

A small Lily of brilliant coloring. Deep waxy scarlet. Height 2 to 3 ft. Stem rooting. Plant 5 inches deep. Flowers in June. 25c each; \$2.50 per doz.



## TIGRINUM SPLENDENS

Orange-red, purple spotted. Stem rooting. Plant 9 inches deep. Height 4 to 5 feet. Flowers September. 30c each; \$3.00 per doz.

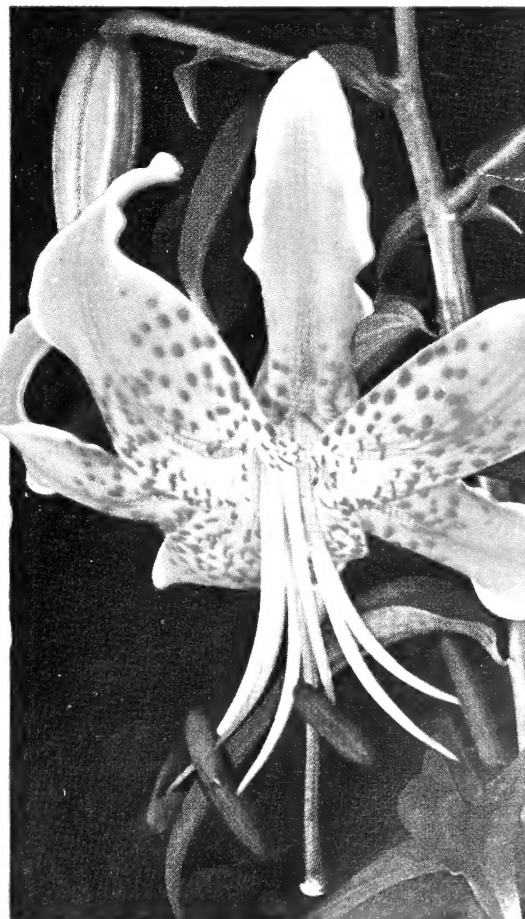


THE GREAT SUNSET LILY FROM CALIFORNIA

## Pardalinum Giganteum—July Blooming

A California variety bearing 12 to 20 strongly recurved flowers of a bright orange, spotted dark crimson. Moisture-loving, but seems to do well wherever lime is not prevalent. Base rooting, plant 5 inches deep. July. 4 to 5 feet. 40c each; \$4.00 per doz.; \$51.00 per 100.

Van  
Bourgondien's  
Distinguished  
Lilies  
Best for the  
Garden  
Plant 3 or  
More of a  
Variety for  
Best Results



## LILIUM SPECIOSUM RUBRUM

(Pink)

As the illustration shows, this is the most desirable rank 12 to 15 inch variety, and September and October blooming in your garden. Available in 12 inch, \$8.75 per doz.





**Genuine Dutch Bulbs  
from Holland**

ORANGE  
FAVORITE

FANTASY  
(See page 6)

**Van Bourgondien Bros.**  
INC.

**Babylon, Long Island, New York**

TELEPHONE: BABYLON 264

ROUTE 109—FARMINGDALE ROAD

*Growers of Dutch Bulbs*

SUNSHINE

OPAL QUEEN

THE REST

(SEE PAGE 6)